

2004 Republican National Convention

New York City Police Department Executive Summary



Michael R. Bloomberg
Mayor of the City of New York

Raymond W. Kelly
Police Commissioner

CONFIDENTIAL
Law Enforcement Only

Table of Contents

Table of Contents **i**

OVERVIEW **1**

Situation & Threat Assessment *1*

Mission *1*

Venue *1*

Other Sites & Facilities *2*

PLANNING PROCESS **2**

Training *3*

Deployment Strategy (pre-convention) *4*

 Quality-of-Life *4*

 Transportation Facilities *4*

 Interagency Coordination & Support *5*

 Business/Public Outreach *5*

Equipment *6*

OPERATIONS **6**

EXECUTION **7**

Venue & Site Security *7*

 Perimeter Security Zones *7*

 Madison Square Garden Interior *7*

 Vehicle Checkpoint Plan *7*

Hotels *8*

Traffic Control (Delegate Bus) Plan *8*

Transportation Facilities *9*

 Penn Station *9*

Demonstrations & Civil Rights Issues *9*

Command and Control *10*

Airspace Security *10*

Investigative/EOD Components *11*

Intelligence Gathering & Coordination *11*

Mobile Response & Demonstrations *11*

6/24/2004

- DRAFT -
Confidential

i

Civil Disturbance & Arrest Processing 11

CONCLUSION 12

APPENDIX A – RNC Expected Protest Activity A

APPENDIX B – Other Events Citywide B

APPENDIX C – Hotel Assignments C

APPENDIX D – RNC Related Events D

APPENDIX E – RNC Broadway Show Schedule..... E

APPENDIX F – CommitteesF

APPENDIX G – Equipment Procurement G

APPENDIX H – Road Surface Preparation and Barrier Placement Timeline..... H

6/24/2004

- DRAFT -
Confidential

ii

OVERVIEW

The Republican National Convention (RNC) will be held in New York City from Monday, August 30th through Thursday, September 2nd, 2004. Madison Square Garden, which was the site of the 1992 Democratic National Convention, has been chosen to be the main venue for the RNC. As many as 50,000 people are expected to participate, including:

| | |
|--------|--|
| 2,509 | Delegates |
| 2,344 | Alternates |
| 15,000 | Members of the Media/Press |
| 15,000 | Donors, Governors, Congressional delegations and staff |
| 15,000 | Family, friends, other RNC visitors |

Situation & Threat Assessment

Currently there are no specific threats against the RNC. However, political conventions and elections are potential terrorist targets. The vehicle borne improvised explosive device remains one of the most readily available and frequently used tactics by terrorists worldwide. The use of hazardous materials, including chemical and biological weapons, poses a significant threat as well. Additionally, it is anticipated that New York City will see a volume of protest activity not seen in decades. Organizers from *United for Peace and Justice* predict that 250,000 people will participate in their march and rally scheduled for August 29th. While the vast majority of the participants will be peaceful, the sheer size of this event will place a tremendous strain on the department's resources and severely impact vehicular and pedestrian flow in midtown. Open source information indicates that there will be some individuals and groups, who advocate the use of violence in opposition to the government, seeking to engage in criminal conduct that could significantly endanger public safety. The department has established a June 15, 2004 deadline for the submission of applications for parade permits. (For a complete list of scheduled or anticipated demonstrations during the convention period, refer to appendix "A".)

Mission

This convention will be one of the largest events ever policed by the NYPD in terms of resource deployment and the scope of the event. Other major events, such as the U.S. Open Tennis Tournament, NY Yankees and NY Mets home games will also be taking place during the convention week. See appendix "B" for a complete list of events occurring citywide during the convention. During this time period, the department's mandate is to:

- 1) **Ensure the safety of the citizens of New York and its visitors,**
- 2) **Provide for the security of the RNC,**
- 3) **Minimize the inconvenience to commuters, residents and merchants, and**
- 4) **Facilitate the rights of others to peacefully protest against the convention.**

Venue

Madison Square Garden (MSG): MSG is the main venue and will serve as the convention forum. The tentative schedule is as follows:

Morning session:(1030-1300) Monday, August 30th

Evening sessions: (2030-2300) Monday, August 30th through Thursday, September 2nd

6/24/2004

- DRAFT -
Confidential

1

On Monday evening, the First Lady will address the assembly. On Wednesday evening the Vice President is scheduled to speak and President George W. Bush will be nominated as the party's candidate. On Thursday evening the President will give his acceptance speech. The President will spend time at the Waldorf Astoria Hotel prior to his appearance at the convention however; he is not expected to remain overnight.

Other Sites & Facilities

James A. Farley Post Office: Portions of two floors will be used as a *media center* to support and house approximately 250 media organizations (print, TV, radio, internet). Media entities will also utilize the MSG Theater, Hotel Pennsylvania, and approximately thirty-five production trailers parked in the vicinity of MSG. Media operations will be linked by a **temporary pedestrian bridge** that will span Eighth Avenue at 33rd Street and connect MSG to the Farley building. Conventions are by their very nature media spectacles designed to draw as large an audience as possible. Recognizing the extent of media coverage that will be focused on this event, DCPI will have a command post vehicle on site with a sufficient staff to ensure that media coverage is not impeded and appropriate information is disseminated.

Jacob K. Javits Center: The **Platform Committee** meetings will be held here from **August 23 through August 27th**. Up to 400 RNC members, staff, and members of the public (by invitation only) will attend. These meetings allow the party platform, a statement of principles and policy proposals, to be prepared in advance of the RNC. The Javits Center will also serve as the back-up site to Madison Square Garden in the event that the main venue becomes untenable.

Hotels: Forty-three (43) hotels in Manhattan will house delegates, family members and their guests, donors and other RNC attendees. Major hotels include Marriott Marquis (California delegation), Hilton (Texas and Florida delegations), Waldorf Astoria (POTUS), St. Regis (VPOTUS) and the Sheraton New York (NY delegation). See appendix "C" for a complete list of hotels and their assigned delegations.

Parties/Receptions: Many parties, special events, and receptions will be held during the RNC. These events are typically hosted by the delegations themselves or a private sponsor. Some of the more notable locations include Tavern on the Green, Chelsea Piers, Ellis Island, and the Intrepid Museum. On Saturday, August 28, Time Warner will host a media party for approximately 7,000 invited members of the media at their Columbus Circle headquarters (See appendix "D" for a list of the proposed RNC related events). On Sunday, August 29th, the delegates will attend eight Broadway shows. The shows will begin between 1600 hours and 1700 hours. The delegates will travel to and from the theater on their own except for the delegates staying at the downtown hotels who will be bussed. See appendix "E" for a list of the Broadway shows and the assigned delegations.

PLANNING PROCESS

Planning for the RNC began in March of 2003. In July 2003, the RNC was designated a National Special Security Event (NSSE). Under an NSSE designation, the United States Secret Service (USSS) acts as the lead federal agency responsible for coordinating all federal assets. The NYPD is the lead local law enforcement agency with overall responsibility for security and public safety. In order to develop and implement security plans for this event, the Secret Service

6/24/2004

- DRAFT -
Confidential

2

00007083

established eighteen inter-agency committees to address various aspects of security such as, airspace security, credentialing, dignitary protection, intelligence and counter terrorism, mass arrest processing and venue security to name but a few. The NYPD and USSS are respective co-chairs of these committees. Participating agencies include city, state and federal security, public safety and health organizations. To augment and enhance this planning process, the NYPD has created thirty internal committees to coordinate the various units responsible for the development of security plans. A.C. John McManus has been designated as the *RNC Coordinator* for the NYPD. His counterpart in the USSS is REDACTED. See appendix "F" for a complete list of the NYPD and federal planning committees and their respective members. Training and pre-convention deployment are critical aspects of the preparation process.

Training

Early on it was recognized that a crucial element of security planning would be the identification of specific RNC training issues and enhancement of the department's already ongoing training programs. At the direction of, and under the supervision of the Police Commissioner, the Counter Terrorism Bureau has initiated a series of table top exercises (internal to the NYPD) testing planning, coordination and resource deployment specific to the RNC. There have been two (2) exercises to date, and these exercises and other drills will continue up until the RNC addressing every conceivable contingency that the department may face. Similarly, the Department of Homeland Security, Office of Domestic Preparedness has conducted two tabletop exercises dealing with civil disturbances, hazardous materials release and terrorist incidents involving myriad city, state and federal agencies. The Training Committee, in cooperation with other agencies and department units, has identified training needs in several areas including:

- **Vehicle Checkpoint Training** – Counter-Terrorism Division, US Postal Police and USSS personnel who will be staffing the vehicle checkpoints are training in the operation of the equipment, proper screening of vehicles and disorder control tactics specific to their mission.
- **Advanced Scooter and Bicycle Operations** – The Disorder Control Unit and Driver Training Unit are training approximately 300 members of the service in the use of bicycles and another 300 in the use of scooters. In addition to the safe operation of the scooters and bicycles, the program includes advanced disorder control tactics.
- **Advanced Motorcade and Protection Operations** – The Highway Patrol, Intelligence Division, Emergency Service Unit and the USSS are preparing to safely move dignitaries and protect motorcades and have already conducted motorcade protection drills.
- **Legal Issues** – The Deputy Commissioner of Legal Matters, Manhattan District Attorney, U.S. Attorney and the USSS are exploring all legal issues related to the convention and the expected demonstrations.
- **Demonstrations** – The Disorder Control Unit is conducting advanced disorder control training to prepare personnel to effectively deal with large demonstrations.
- **Subway Track Training** – The Transit Division, Metropolitan Transportation Authority, and NYC Transit are training police personnel who will be assigned to protect rail yards and to inspect track-beds and trains.
- **RNC Orientation** – All members of the service will be shown several training videos dealing with disorder control issues, legal issues, counter terrorism, media relations and courtesy, professionalism and respect.

6/24/2004

- DRAFT -
Confidential

3

000007084

In addition to RNC specific training, the NYPD is conducting ongoing department-wide training with an emphasis on Weapons of Mass Destruction (WMD), Counter-Terrorism, Traffic Control, as well as an RNC overview. These programs include:

- **Cobra-Cohort Training** – By July 2, 2004, approximately 8,000 UMOS will be COBRA qualified. This is in addition to over 750 patrol borough task force officers already trained.
- **Entry Level Training** – Recruit classes are receiving enhanced training in WMD, Disorder Control and Traffic Control. Newly hired traffic agents are receiving Terrorism Awareness/Domestic Preparedness training.
- **Promotional Training** – Since March 2004, all new supervisory promotees have received enhanced training in demonstrations, First Amendment issues, and an overview of the RNC.
- **Informational Booklets** – The department is producing 20,000 informational guides containing RNC specific as well as general visitor information for the Police Officers assigned to RNC related details so that they can better serve the public.
- **Transit Incident Drills** – Members of the Department have participated in drills simulating incidents in transportation facilities, including the MTA Highbridge facility in the Bronx and the NYC Transit facility at Bowling Green in Manhattan. The next scheduled drill will simulate an incident in Penn Station and is scheduled for June 21st on the first platoon.

Deployment Strategy (pre-convention)

The department's Deployment Strategy will involve a sophisticated approach, designed to "set the stage" to allow for a safe convention with minimal inconvenience to the public. To achieve this goal, the department is dedicating resources prior to the convention to focus on the following issues.

Quality-of-Life

The quality-of-life Team will begin operations on July 28, 2004. The Team will be operational seven days a week/twenty-four hours a day through September 3, 2004. Their mission, working with such entities as the Department of Homeless Services, will be to address illegal activity and quality-of-life issues including vice, narcotics, peddlers, pickpockets, fraud and homeless conditions. Enforcement will be concentrated in the area around Madison Square Garden as well as the hotels and other venues used by the RNC delegates and their guests.

Transportation Facilities

Transportation facilities will be receiving increased surveillance and coverage prior to the RNC. Among the measures being taken are:

REDACTED

Law Enforcement Privilege

6/24/2004

- DRAFT -
Confidential

4

000007085

Enhanced Intelligence Gathering

The NYPD Intelligence Division, in partnership with the USSS, FBI, Joint Terrorist Task Force and other Federal, State and local law enforcement agencies, has increased its intelligence gathering capabilities. The Intelligence Division continues to tap all available sources to develop the most accurate information available that may affect the planning process. The Intelligence Fusion Center is being enhanced and it will be the nexus for the flow of all incoming raw intelligence data. All decisions and actions will be coordinated through the Multi Agency Coordination Center (MACC) once it is activated. The MACC will be located on the eighth floor of One Police Plaza at the department's Emergency Operations Center (EOC).

Interagency Coordination & Support

Preparation for the RNC has been a cooperative effort amongst numerous agencies. Their support and cooperation is vital not only to the security aspects of the RNC, but to the success of the entire convention. The department enjoys a good working relationship with the Committee on Arrangements (COA) which is the entity within the Republican National Committee responsible for producing the convention. Similarly, the department works with the New York City Host Committee on a daily basis. The Host Committee is the New York City organization responsible for facilitating the convention. Partners from the government sector include the USSS, FBI, FDNY, NYC Parks Department, Mayor's Community Assistance Unit, NYC Department of Transportation and Department of Emergency Management.

Business/Public Outreach

The NYPD is committed to an extensive public and business outreach. A coordinated public information campaign is being developed with the assistance of the NYC Host Committee, Small Business Service, Community Assistance Unit, 34th Street Partnership, MTA, and NYC Transit Authority. The RNC Coordinator's office, in conjunction with the Crime Prevention Division, and Mid-Town South Community Affairs will ensure that the information disseminated is consistent, precise, accurate and not detrimental to security planning. To this aim, the following actions have been undertaken or are being developed:

- Presentations about the impact of the convention to specific security and business organizations with a vital interest in the area.
- Development of an initial information flyer (with additional follow-ups)
- Outreach to the hotel industry with an emphasis on coordination with security directors and vulnerability assessments.
- **Maximum utilization of the APPL program. A city-wide APPL meeting, hosted by the NYPD, is tentatively scheduled for late July.**
- Public service announcements will be made in MTA, Amtrak, NJ Transit and NYC Transit facilities and on trains alerting commuters to changes in service and access into stations.

Equipment

REDACTED
Law Enforcement Privilege

OPERATIONS

The day to day functioning of New York City must go on unimpeded during the RNC time period but security must also be maintained. The department is endeavoring to minimize the impact of its security measures upon residents and visitors to the city. Enhanced security measures will be implemented on a citywide basis including the deployment of *Hercules Teams* and the posting of critical infrastructure, transit facilities, houses of worship and other sensitive locations. Despite the concentration of effort directed at the RNC, the NYPD has not diminished its capabilities in terms of appropriate coverage at other events elsewhere in the city. Counter terrorism and intelligence gathering initiatives will focus on detection and prevention potential threats. To fulfill these objectives, the following measures will be undertaken:

- Citywide Security Plan – All scheduled events are being evaluated and vulnerability assessments for key venues are being performed in order to determine the appropriate security and public safety measures.
- Executive Tabletop Exercises are regularly used to identify vulnerabilities and develop necessary strategies.

REDACTED
Law Enforcement Privilege

- The Traffic Control Division will continuously monitor traffic movement citywide from the traffic management center in Long Island City. Information about traffic conditions will be disseminated to the media and through the use of variable message signs on arterial roadways.
- Citywide aerial surveys will be conducted by the department's helicopter fleet. The fleet is being upgraded with new helicopters, at least one of which will be delivered prior to the convention.
- Adequate staffing will be maintained in precincts, transit districts and police service areas so that calls for service will be handled without interruption and pro-active anti-crime measures will be maintained.

6/24/2004

- DRAFT -
Confidential

6

000007087

- The department will maximize utilization of civilian personnel (traffic agents, school safety agents, etc.), as well as Auxiliary Forces, to optimize operational strength.
- The recruit class entering the Police Academy in July 2004 (approximately 1,600 recruits) will be used for traffic control assignments and barrier detail.

EXECUTION

The implementation of the security plans designed around the convention will involve extensive coordination among participating agencies. The protective measures are designed to address all potential events and contingencies. The principal components of the security plan include the following:

Venue & Site Security

REDACTED
Law Enforcement Privilege



Madison Square Garden Interior

REDACTED
Law Enforcement Privilege



Vehicle Checkpoint Plan

REDACTED
Law Enforcement Privilege



6/24/2004

- DRAFT -
Confidential

7

000007088

REDACTED
Law Enforcement Privilege

Hotels

REDACTED
Law Enforcement Privilege

Traffic Control (Delegate Bus) Plan

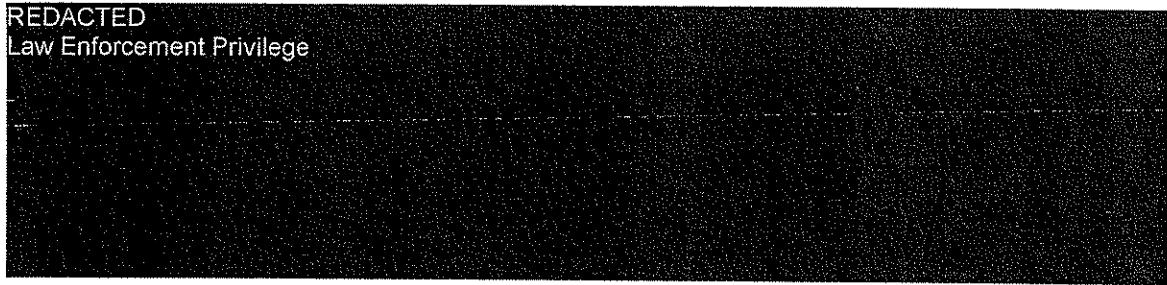
REDACTED
Law Enforcement Privilege

6/24/2004

- DRAFT -
Confidential

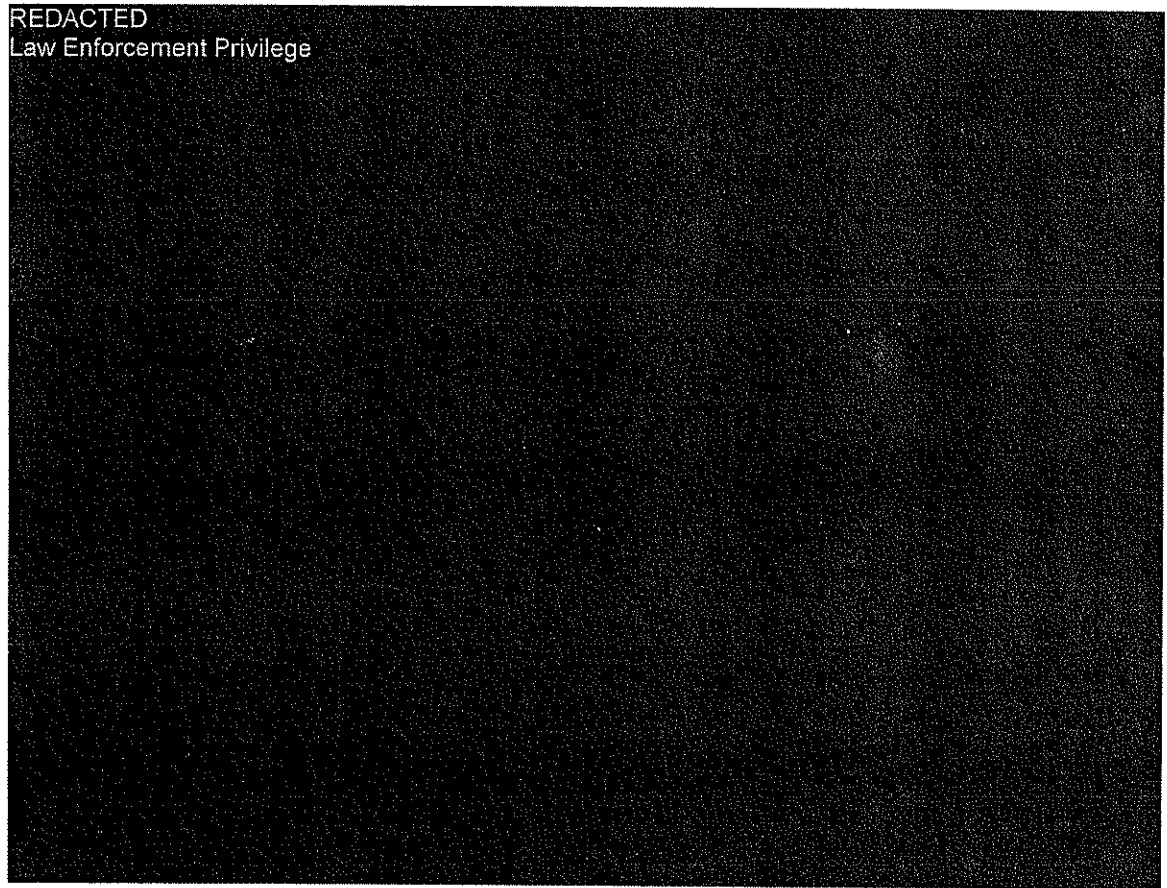
Transportation Facilities

REDACTED
Law Enforcement Privilege



Penn Station

REDACTED
Law Enforcement Privilege



Demonstrations & Civil Rights Issues

The NYPD will facilitate the right of others to peacefully assemble and protest during the convention. The Department will also ensure this is done in a lawful manner that is respectful of other citizens' rights. To this end, the NYPD has met with representatives from the New York Civil Liberties Union (NYCLU) as well as demonstration organizers. These meetings will continue in order to maintain an open dialogue and clarify logistical issues as well as security concerns.

6/24/2004

- DRAFT -
Confidential

9

A variety of organizations have applied for permits or otherwise expressed an interest in sponsoring a demonstration during the convention period. Over thirty-five separate demonstrations or marches are anticipated (See appendix "A").

No parade permits have been approved yet pending the June 15, 2004 deadline imposed by the department for submission of all permit requests.

United for Peace and Justice has requested permission to sponsor a march and rally on August 29th. The organizers anticipate 250,000 participants. The exact route and rally area have yet to be determined and are the subject of ongoing negotiations.

Command and Control

Multi-Agency Coordination Center (MACC) will be located at One Police Plaza on the 8th. The MACC will have representatives from city, state and federal law enforcement agencies and other key entities involved with the convention. The MACC will be the agency command center where information will be shared and agency activities coordinated.

Intelligence Fusion Center will be the main intelligence gathering and dissemination center located at the Chelsea Market. All leads will be investigated, actionable items will be addressed and intelligence information disseminated through timely briefings to units in the field. The ***Information Center (JIC)***, for dissemination of information to the press, will be located at City Hall.

Space Security

REDACTED
Law Enforcement Privilege

Investigative/EOD Components

REDACTED
Law Enforcement Privilege



Intelligence Gathering & Coordination

REDACTED
Law Enforcement Privilege



Mobile Response & Demonstrations

The Disorder Control Unit has developed an enhanced mobile field force, to be deployed in teams in vans, on motorized scooters and bicycles. The NYPD has recently purchased 300 new scooters. This will allow for great mobility to address spontaneous incidents, including unscheduled protests or marches. The mobile field forces will also be able to assist with the movement of delegate buses, hotel security and increase the uniformed coverage at transportation facilities. Squads from the mobile field force will, on a rotational basis, visit hotels, critical infrastructure and transit facilities creating a sense of omni-presence and deterring criminal and terrorist activity.

- The proposed demonstration area is on Eighth Avenue, beginning at 30th Street, and extending south as far as necessary.
- A separate uniform detail will be assigned to the demonstration area(s).

Civil Disturbance & Arrest Processing

- A coordinated plan has been developed with the Mayor's Criminal Justice Coordinator, the Office of Court Administration, the Manhattan District Attorney, the Department of Correction and the Health and Hospitals Corporation.
- The capacity of the mass arrest processing center at One Police Plaza has been enhanced. Up to 220 prisoners can be processed at any one time.

6/24/2004

- DRAFT -
Confidential

11

000007092

- A physician and registered nurse will provide medical evaluations at the arrest processing center.
- Court calendars will be curtailed to eliminate all but statutorily required court appearances by police officers.
- An arrest triage area will be established in PBMS to evaluate each arrest and insure that all necessary information is available to expedite the arrest process.
- Additional arraignment parts will be added as necessary to accommodate arraignments.
- The Brooklyn House of Detention and the Queens House of Detention are available as alternate housing facilities for holdover prisoners awaiting arraignment.
- Corrections prisoner busses will be staged inside the outer perimeter for quick response and removal of prisoners to a mass arrest incident in or near the "frozen zone". MTA buses will be available to augment the department's prisoner transportation needs if necessary.

CONCLUSION

The material contained in this document is law enforcement sensitive and for official use only. This is a living document and the preparations outlined above represent the most recent state of readiness. Modifications are anticipated. Planning for the RNC is occurring along a world time line continuum. As such, many variables may dramatically affect the aforementioned measures designed to provide for a secure environment.

6/24/2004

- DRAFT -
Confidential

12

000007093

APPENDIX A – RNC Expected Protest Activity

A

000007094

REPUBLICAN NATIONAL CONVENTION EXPECTED PROTEST ACTIVITY AS OF 6/17 - LAW ENFORCEMENT SENSITIVE

| Group/Event | Reason | Date | Start Time | End Time | Location | FCT/BORO | # Expected | Permit Applied Y/N Permit Status |
|-------------|--------------------------------|------|------------|----------|--------------------------------|----------|------------|---|
| | | | | | | | | REDACTED Law Enforcement Privilege |
| 2 | REPUBLICAN NATIONAL CONVENTION | | | | STATE STREET MADISON AVENUE | | | |
| 3 | REPUBLICAN NATIONAL CONVENTION | | | | STATE STREET MADISON AVENUE | | | |
| | | | | | | | | REDACTED Law Enforcement Privilege |

REPUBLICAN NATIONAL CONVENTION EXPECTED PROTEST ACTIVITY AS OF 6/17 - LAW ENFORCEMENT SENSITIVE

| | Group/Event | Reason | Date | Start Time | End Time | Location | PCT/BORO | # Expected | Permit Applied Y/N Permit Status |
|----|--|--------------------------------|--------|------------|----------|---------------------------|------------|------------|--|
| | REDACTED Law Enforcement Privilege | | | | | | | | |
| 8 | | | | | | | | | |
| 9 | | | | | | | | | |
| 10 | UNION SQUARE MIDDLE EAST PEACE COALITION | MIDDLE EAST PEACE | 28-Aug | 1:00 HRS | 1800 | UNION SQUARE PARK | 013 TBOMS | 30 PEOPLE | YES - PARKS DEPT |
| 11 | NATIONAL COUNCIL OF ARAB AMERICANS | CIVIL RIGHTS AND ARAB CONCERNS | 30-Aug | 1000 | 1500 | CENTRAL PARK - GREAT LAWN | CITY PRIMS | 75,000 | YES - PARKS DEPT PARKS DEPT WILL ESPE DENIAL. GROUP TO MEET W NYPD & PARKS DEPT ON 6/18 |

2 of 7 6/25/2004 10:21 AM

GR=PARKS PERMIT; BL=NYPD PERMIT; R=NYPD AND PARKS PERMITS; Y=INTEL LAW ENFORCEMENT SENSITIVE

REPUBLICAN NATIONAL CONVENTION EXPECTED PROTEST ACTIVITY AS OF 6/17 - LAW ENFORCEMENT SENSITIVE

| Group/Event | Reason | Date | Start Time | End Time | Location | PCT/PSRO | # Expected | Permit Applied Y/N Permit Status |
|---------------------------------------|---|--------|------------|----------|--|---------------------|------------|--|
| 12 | GOSPEL CONCERT | 28-Aug | 1000 | 1800 | TBD | CP/PSMS | 20,000 | YES - PARKS DEPT |
| REDACTED Law Enforcement Privilege | | | | | | | | |
| 14 | GREEN PARTY HOSTING RECEPTION WITH STEAKERS AND MUSIC | 28-Aug | 1000 | 1800 | ST VARTANS PARK- 35TH STREET AND 1ST AVE | 017.PBMS | 1,100 | YES - PARKS DEPT; PARKS WILL OFFER DAG HAM PLAZA 47/1ST - 017 PCT |
| 15 | CODE PINK WOMEN FOR PEACE | 29-Aug | 0800-1100 | 1200 | RIVERSIDE PARK & RIVERSIDE CHURCH | 026.PBMS | 200 | YES - PARKS DEPT. |
| 16 | UNITED FOR PEACE AND JUSTICE | | | | NOT ON WITH FROM 11:30 TO 12:00 TO COLUMBUS CIRCLE. NOT ON 11:30 TO 12:00. WHILE GROUP WANTS TO ENTER PARK AND PROCEED TO COLUMBUS CIRCLE. | 0107.BAS/TO 07.PBMS | 20,000 | YES - PARKS DEPT. DENIED PERMIT. PERMISSIVE APPLICATOR UNDER APPEAL TO PERS. ON 10/18/04. WILL BE ON 10/18/04. |
| 17 | | | | | | | | |
| 18 | NUBLU MUSK FESTIVAL AND CONCERT | 29-Aug | 1400 | 2000 | TOMPKINS SQUARE PARK | 009.PBMS | 500 | YES - PARKS DEPT |

REPUBLICAN NATIONAL CONVENTION EXPECTED PROTEST ACTIVITY AS OF 6/17 - LAW ENFORCEMENT SENSITIVE

| Group/Event | Reason | Date | Start Time | End Time | Location | FCT/BOBO | # Expected | Permit Applied Y/N Permit Status |
|-------------|--|----------|------------|----------|--|----------------|------------|---|
| 19 | | | | | | | | REDACTED Law Enforcement Privilege |
| 21 | FOR PROTEST FOR GAY/BISEXUAL PEOPLE'S RIGHTS | 10/24/04 | 11:00 | | MARCHING HALL HAWAIIAN ISLAND PACIFIC CENTER | 11A/11M/17B/1A | | YES PARKS PERMIT APPROPRIATION |
| 22 | WARRIORS FOR PROTEST FOR GAY/BISEXUAL PEOPLE'S RIGHTS | 10/24/04 | | | CONVENTION CENTER HAWAIIAN ISLAND PACIFIC CENTER | | | |
| 23 | WARRIORS FOR PROTEST FOR GAY/BISEXUAL PEOPLE'S RIGHTS | 10/24/04 | | | CONVENTION CENTER HAWAIIAN ISLAND PACIFIC CENTER | | | |
| 24 | WARRIORS FOR PROTEST FOR GAY/BISEXUAL PEOPLE'S RIGHTS | 10/24/04 | | | CONVENTION CENTER HAWAIIAN ISLAND PACIFIC CENTER | | | YES PARKS PERMIT APPROPRIATION |

4 of 7 6/25/2004 10:21 AM

GR-PARKS PERMIT; BL=NYPD PERMIT; R=NYPD AND PARKS PERMITS; Y=INTEL LAW ENFORCEMENT SENSITIVE

REPUBLICAN NATIONAL CONVENTION EXPECTED PROTEST ACTIVITY AS OF 6/17 - LAW ENFORCEMENT SENSITIVE

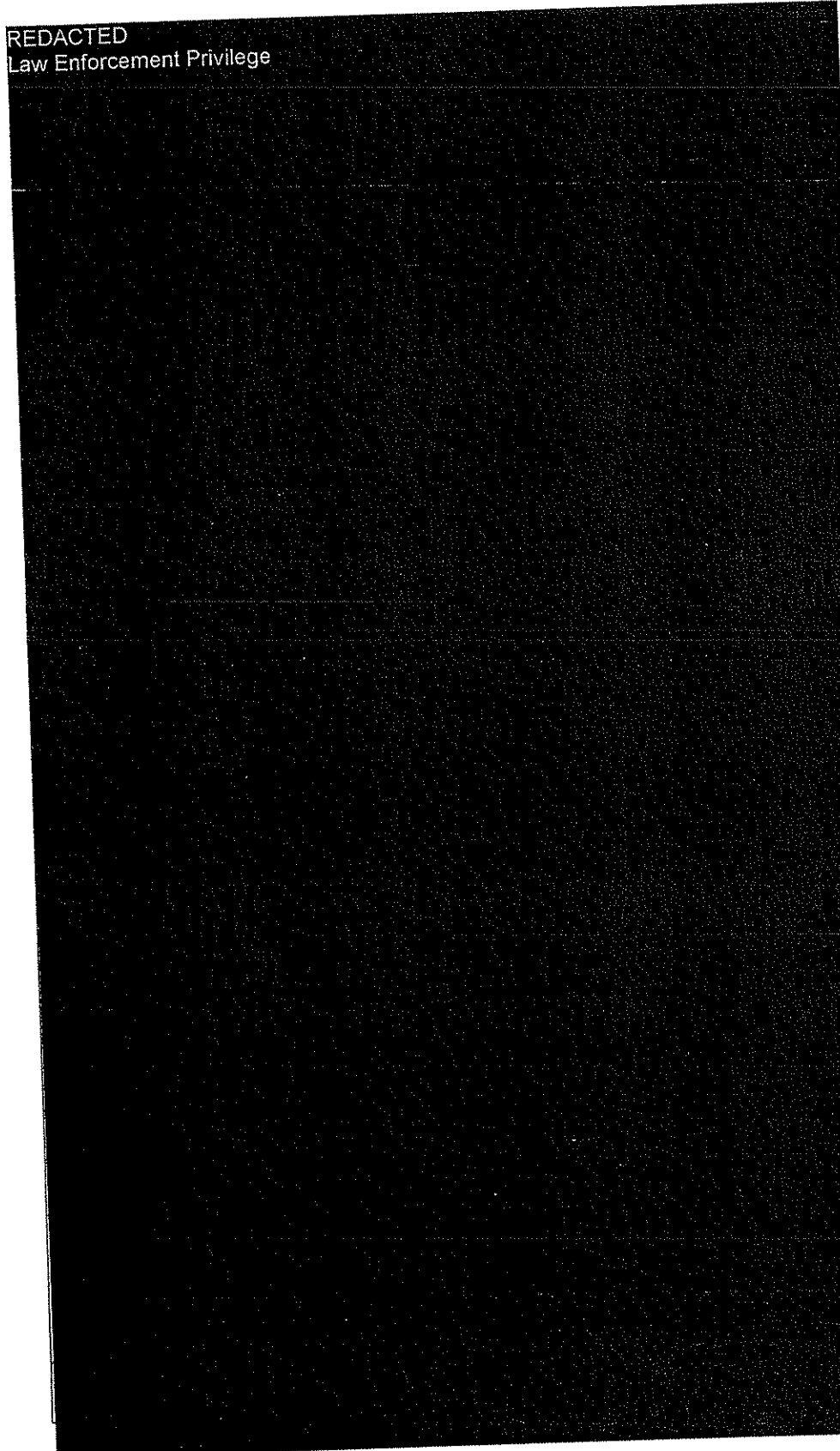
| Group/Event | Reason | Date | Start Time | End Time | Location | PCT/BORO | # Expected | Permit Applied Y/N Permit Status |
|-------------|---------------------------|--------|------------|----------|----------------------------------|----------|------------|---|
| 28 | COLLECTIVE ART WORK | 31-Aug | 900 | 2000 | UNION SQUARE PARK | 013-PBMS | 300 | YES - PARKS DEPT |
| 29 | NARAL PRO-CHOICE NEW YORK | 31-Aug | 1700 | 1900 | MADISON SQUARE PARK | 013-PBMS | 2,000 | YES - PARKS DEPT; NYCLU TO MEET W/PBMS ON 6 18 |
| 30 | THE "LINE" | 1-Sep | UNK | UNK | BROADWAY FROM WALL STREET TO MSG | PBMS | UNK | NYCLU TO MEET W/PBMS ON 6 16 |
| 31 | SILENT MARCH | 1-Sep | 1000 | 1630 | UNION SQUARE PARK | 013-PBMS | 1,000 | YES - PARKS DEPT; DISCUSSION HELD W/NYPD AND PARKS DEPT |
| 32 | FIRST AMENDMENT DISPLAY | 1-Sep | 600 | 1800 | UNION SQUARE PARK | 013-PBMS | 1,000 | YES - PARKS DEPT; DISCUSSION HELD W/NYPD AND PARKS DEPT |

REDACTED
Law Enforcement Privilege

5 of 7 6/23/2004 10:21 AM

GR-PARKS PERMIT; BI-NYPD PERMIT; R-NYPD AND PARKS PERMIT; V-INTEL LAW ENFORCEMENT SENSITIVE

REPUBLICAN NATIONAL CONVENTION EXPECTED PROTEST ACTIVITY AS OF 6/17 - LAW ENFORCEMENT SENSITIVE



REDACTED
Law Enforcement Privilege

6 of 7 6/25/2004 10:21 AM

GR=PARKS PERMIT; BL=NYPD PERMIT; R=NYPD AND PARKS PERMITS; Y=INTEL LAW ENFORCEMENT SENSITIVE

000007100

REPUBLICAN NATIONAL CONVENTION EXPECTED PROTEST ACTIVITY AS OF 6/17 - LAW ENFORCEMENT SENSITIVE

REDACTED
Law Enforcement Privilege

7 of 7 6/25/2004 10:21 AM

GA=PARAS PERMIT; BL=NYPD PERMIT; K=NYPD AND PARKS PERMITS; Y=INTEL LAW ENFORCEMENT SENSITIVE

APPENDIX B – Other Events Citywide

B

000007102

REDACTED
Law Enforcement Privilege

REDACTED
Law Enforcement Privilege

REDACTED
Law Enforcement Privilege

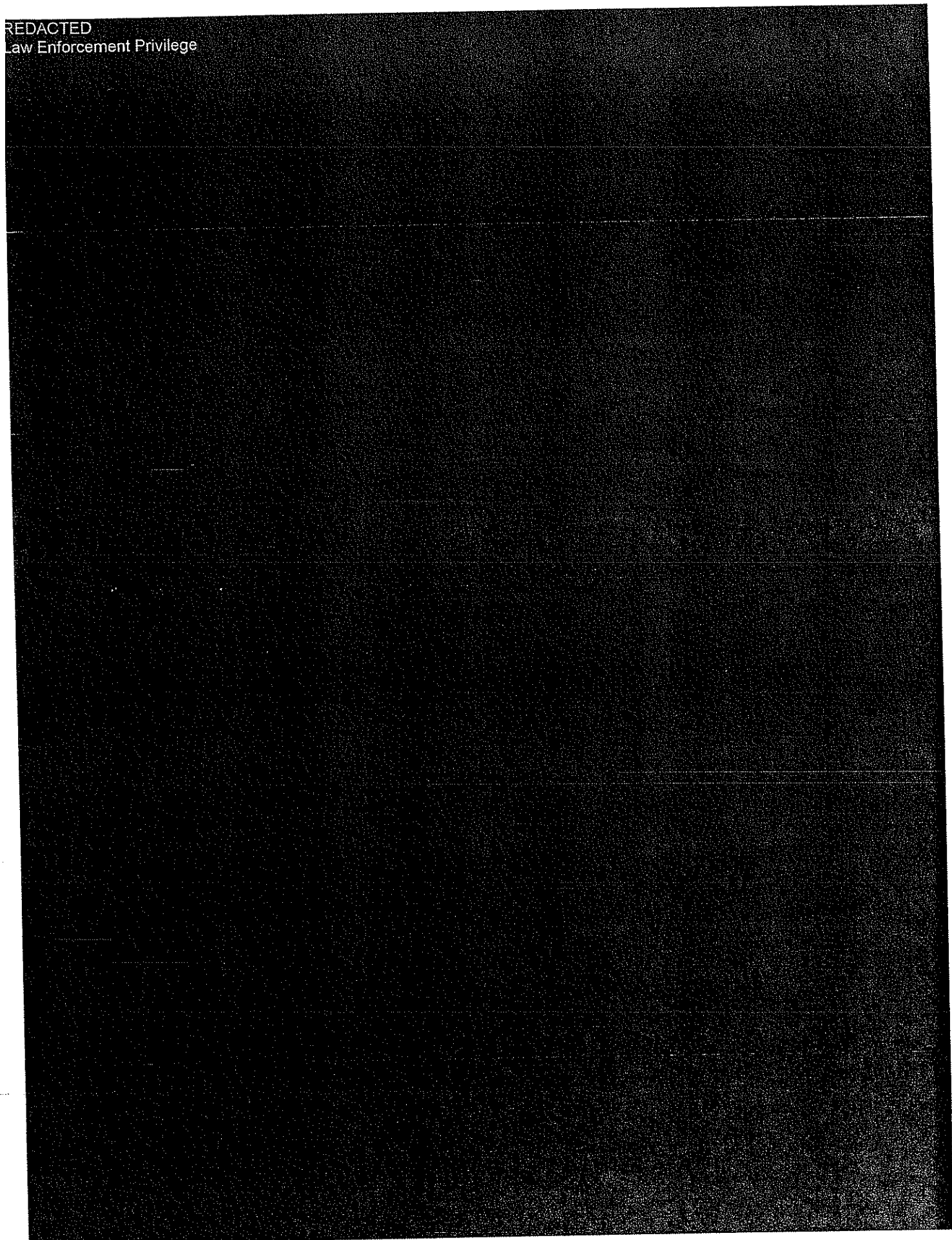
000007105

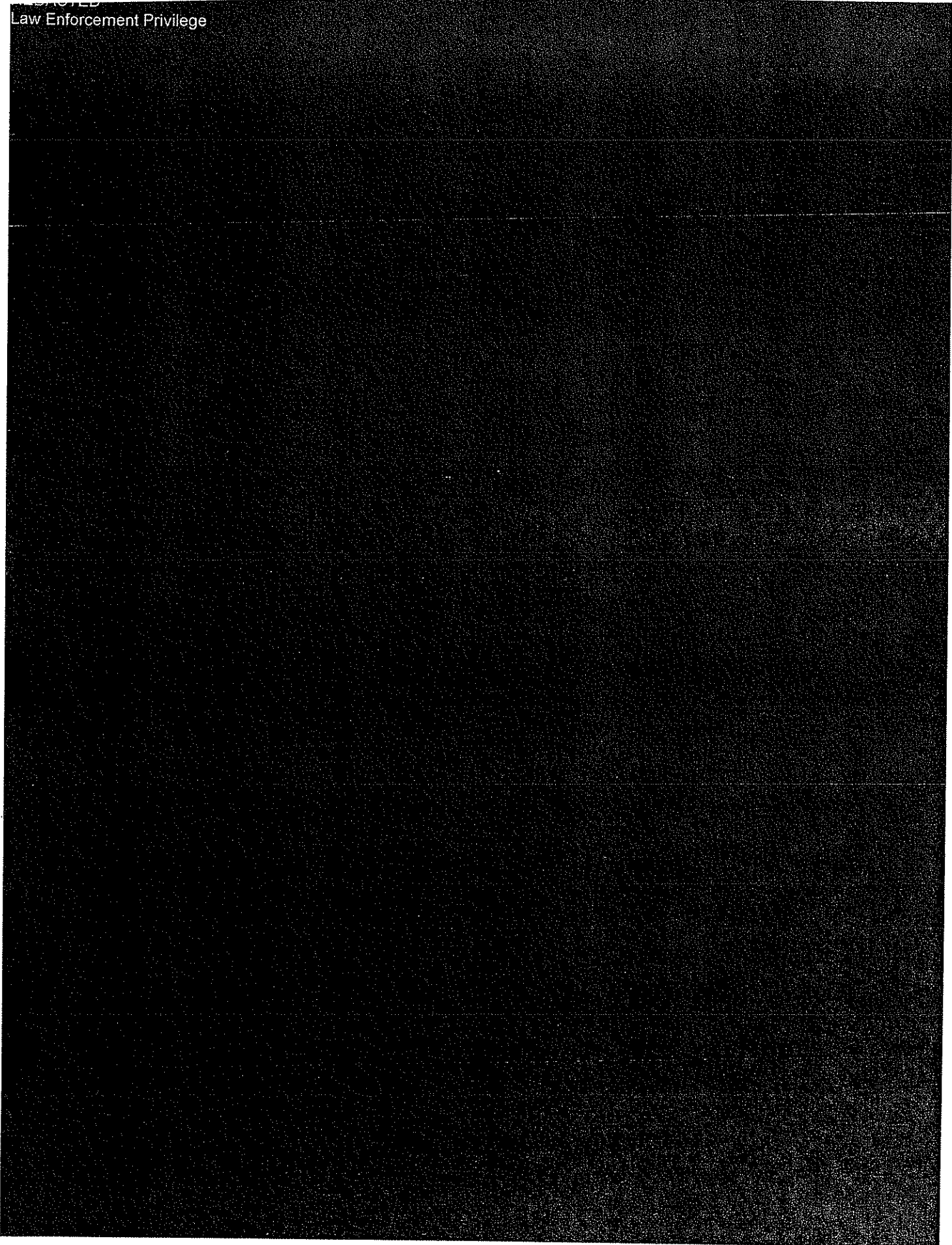
Confidential and Subject to Protective
Order (USDC SDNY)

DACTED
w Enforcement Privilege

000007106

Confidential and Subject to Protective
Order (USDC SDNY)





DACTED
w Enforcement Privilege

000007110

Confidential and Subject to Protective
Order (USDC SDNY)

DACTED
w Enforcement Privilege

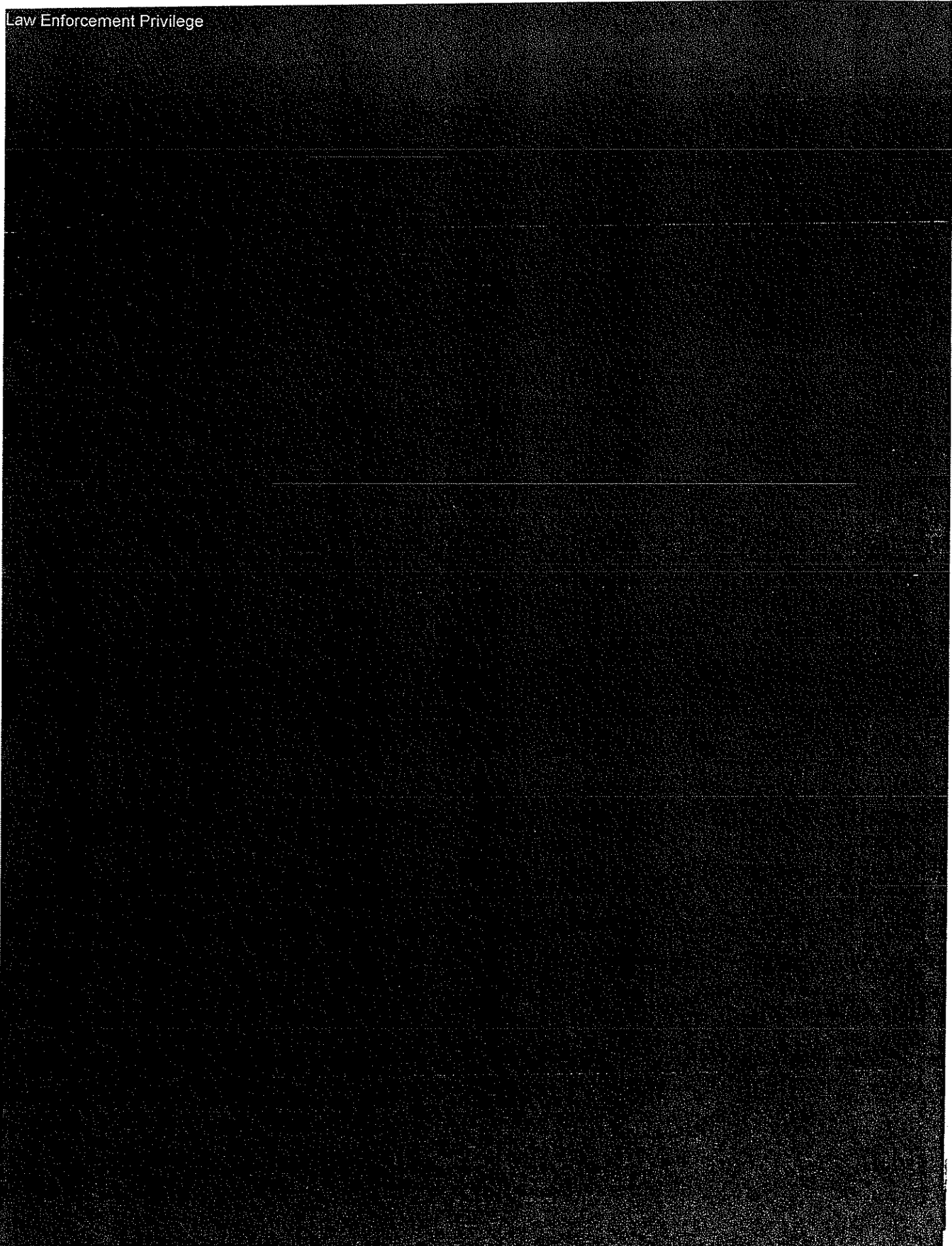
000007111

Confidential and Subject to Protective
Order (USDC SDNY)

DACTED
w Enforcement Privilege

000007112

Confidential and Subject to Protective
Order (USDC SDNY)



APPENDIX C – Hotel Assignments

C

000007114

REDACTED
Law Enforcement Privilege

000007115

Confidential and Subject to Protective
Order (USDC SDNY)

REDACTED
Law Enforcement Privilege

000007116

Confidential and Subject to Protective
Order (USDC SDNY)

DACTED
Enforcement Privilege

000007117

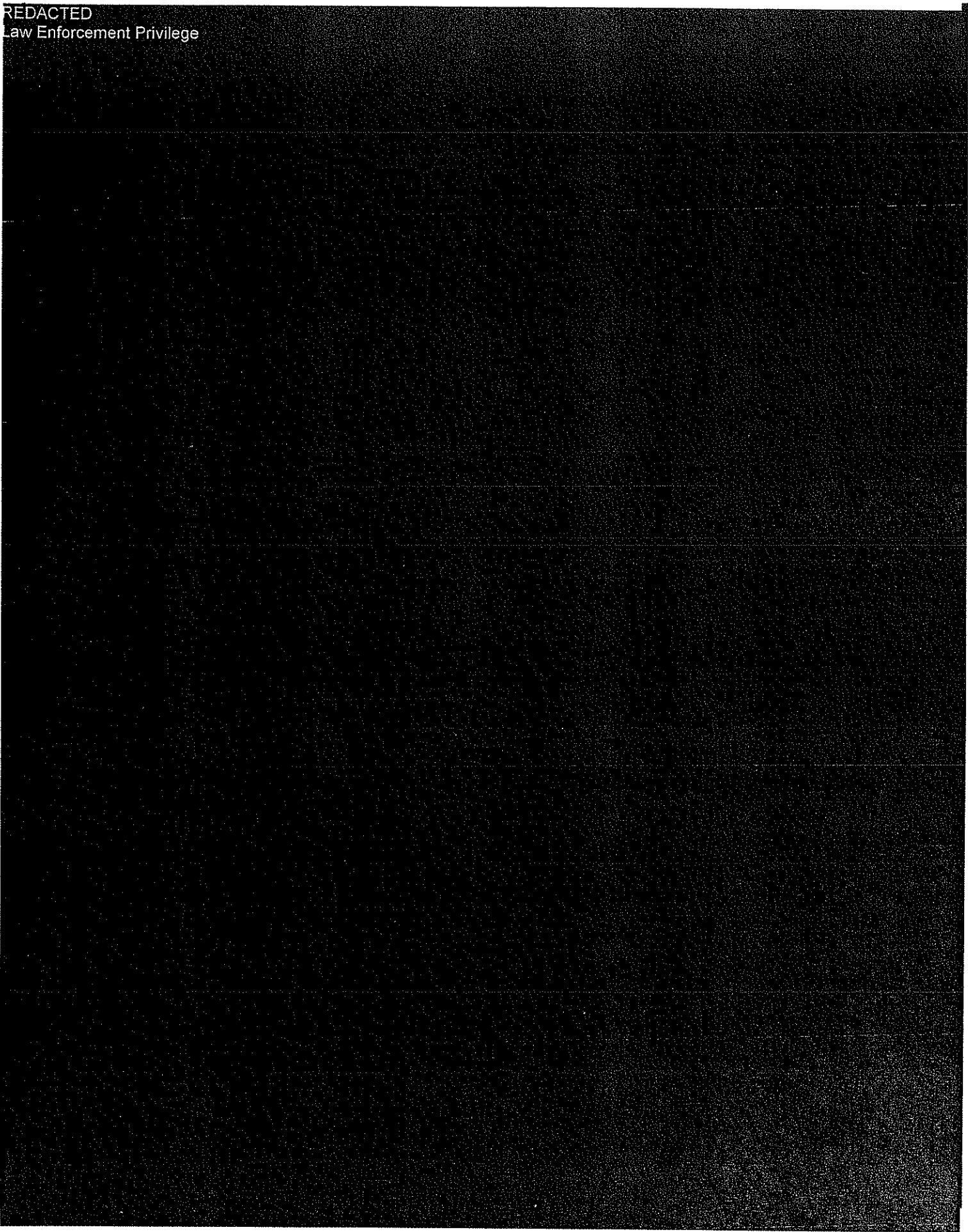
Confidential and Subject to Protective
Order (USDC SDNY)

DACTED
Enforcement Privilege

000007118

Confidential and Subject to Protective
Order (USDC SDNY)

REDACTED
Law Enforcement Privilege



APPENDIX D – RNC Related Events

D

000007120

RNC Planned Events (Tentative)

| Date | Time | Event | Location | Event | Sponsor | State | Invites | Comments |
|-----------------------------------|-----------|-----------------------------|-------------------------------|-----------------------------|--|-------|---------|--|
| RNC EVENTS AUGUST 28, 2004 | | | | | | | | |
| 28-Aug-04 | 1300-1630 | Shabbos Lunch | Richmond County Bank Ballpark | S.I. Yankees/Bklyn Cyclones | American Council on Science and Health | GA | 100 | Event for Jewish Republicans |
| 28-Aug-04 | 1900-2200 | TBD | TBD | TBD | Convention Youth Program | | TBD | Waiting to contact COA for venue |
| 28-Aug-04 | 1900 | Pre-Session @ NYMEX | NYMEX | | Greenberg Traurig | | TBD | |
| 28-Aug-04 | TBD | Madame Tussaud's Wax Museum | | | Indiana Republican Party | | TBD | |
| 28-Aug-04 | TBD | Sheraton, NY | | | New Jersey Republican Party | | TBD | |
| 28-Aug-04 | TBD | Winter Garden | | | NRCC | | TBD | |
| 28-Aug-04 | TBD | Noche | | | Puerto Rico Republican Party | | TBD | |
| 28-Aug-04 | TBD | Dinner | | | RNC Finance | | TBD | |
| 8 Events For 8/28/04 | | | | | | | | |
| RNC EVENTS AUGUST 29, 2004 | | | | | | | | |
| 29-Aug-04 | TBD | Concert | Roseland Ballroom | | AFLAC Cancer Center of Atlanta | GA | 2,500 | |
| 29-Aug-04 | TBD | TBD | Central Park Boathouse | | Alabama Republican Party | | TBD | |
| 29-Aug-04 | 1700-2100 | Texas Style BBQ | | | American Council on Science and Health | | TBD | Event for Jewish Republicans |
| 29-Aug-04 | All Day | TBD | Chelsea Pier 60 | | American Israeli PAC | | TBD | Joint event w/United Jewish Communities |
| 29-Aug-04 | TBD | TBD | Grand Central Station | | Arizona Republican Party | | TBD | |
| 29-Aug-04 | 1800-2000 | Luncheon | Carnegie Hall | | Citigroup | | TBD | |
| 29-Aug-04 | TBD | Luncheon | Tavern on the Green | | Colorado Republican Party | | TBD | "A Taste of NY" |
| 29-Aug-04 | TBD | Luncheon | The Sheraton | | Connecticut Republican Party | | TBD | |
| 29-Aug-04 | TBD | TBD | Hotel Pennsylvania | | Convention Youth Program | | 250 | |
| 29-Aug-04 | TBD | (On Hold) | NY Yacht Club | | Distilled Spirits Council of The United States | | TBD | |
| 29-Aug-04 | TBD | Reception | Capital | | Emily Pataki & T. Whitman | | 2,500 | Event for Next Generation of Republicans |
| 29-Aug-04 | TBD | Evening Event | Intrepid | | Florida Republican Party | | TBD | |
| 29-Aug-04 | TBD | Dinner | Hammerstein Ballroom | | General Motors | | 900 | |
| 29-Aug-04 | TBD | Brunch | Tavern on the Green | | Georgia Republican Party | GA | TBD | At least 2 evening events |
| 29-Aug-04 | TBD | Outdoor Brunch | Ritz Carlton | | Indiana Republican Party | | TBD | |
| 29-Aug-04 | 1100-1330 | TBD | Downtown | | Kentucky Republican Party | | TBD | Possible event hosted by Altria |
| 29-Aug-04 | TBD | Reception | TBD | | Maryland Republican Party | | TBD | |
| 29-Aug-04 | TBD | Reception | Gotham Hall | | Michigan Republican Party | | TBD | |
| 29-Aug-04 | TBD | Reception | Sylvia's | | Minnesota Republican Party | | TBD | |
| 29-Aug-04 | 1900-2130 | Reception | NY Marriott Marquis | | Mississippi Republican Party | | 500-600 | |
| 29-Aug-04 | TBD | Meeting | TBD | | National Education Association | | 70 | |
| 29-Aug-04 | TBD | Hotel Office Space | TBD | | National Education Association | | 15 | |
| 29-Aug-04 | TBD | Reception | Ellis Island | | New York Republican Party | | 1,200 | Joint event w/ California |
| 29-Aug-04 | TBD | Dinner | TBD | | North Carolina Republican Party | | TBD | Possible event hosted by Altria |
| 29-Aug-04 | TBD | TBD | TBD | | North Dakota | | TBD | |
| 29-Aug-04 | TBD | TBD | Sheraton, NY | | NRCC | | TBD | |
| 29-Aug-04 | TBD | TBD | Intrepid | | NRSC | | TBD | |
| 29-Aug-04 | TBD | Cocktail Cruise | NY Public Library | | NY State Conservative Party | | TBD | Joint event w/ American Conservative Union |
| 29-Aug-04 | 1800-2100 | Breakfast | Zephyr | | Ohio Republican Party | | TBD | |
| 29-Aug-04 | TBD | Reception | Marriott Marquis | | Ohio Republican Party | | TBD | |
| 29-Aug-04 | 1900-2200 | Cocktail Cruise | Intrepid | | Ohio Republican Party | | TBD | |
| 29-Aug-04 | TBD | TBD | TBD | | Ohio Republican Party | | TBD | |

(Tentative)

| | | | | | | | | |
|----|-----------|-----------|------|------------------------|----------------|---------------------------------------|-----|---------------------------------|
| 42 | 29-Aug-04 | TBD | PBMS | TBD | Brunch | Oklahoma Republican Party | TBD | w/ Senator Nickles |
| 43 | 29-Aug-04 | TBD | PBMS | Pratt House | Reception | Oregon Republican Party | TBD | "Oregon Meets NY" party |
| 44 | 29-Aug-04 | TBD | PBMS | NYSE | Reception | Rep. Tom Delay | TBD | Honor Texas Delegation |
| 45 | 29-Aug-04 | TBD | PBMS | Tavern on the Green | Dinner | Republican Finance Committee | 100 | |
| 46 | 29-Aug-04 | TBD | PBBS | Keyspan Park | Concert | Republican Mainstreet Partnership | TBD | |
| 47 | 29-Aug-04 | 1400-1700 | PBMS | Sky Club | TBD | Republican Mainstreet Partnership | TBD | |
| 48 | 29-Aug-04 | TBD | PBBS | Keyspan Park | Concert | RGAs | TBD | |
| 49 | 29-Aug-04 | TBD | PBMS | 21 Club | Dinner | RNC Finance | 100 | |
| 50 | 29-Aug-04 | TBD | PBMS | Blue Fin | Dinner | RNC Finance | 100 | |
| 51 | 29-Aug-04 | TBD | PBMS | Le Cirque | Dinner | RNC Finance | 100 | |
| 52 | 29-Aug-04 | TBD | PBMS | Noche | Dinner | RNC Finance | 100 | |
| 53 | 29-Aug-04 | TBD | PBMS | River Café | Dinner | RNC Finance | 100 | |
| 54 | 29-Aug-04 | TBD | PBMS | Tavern on the Green | Dinner | RNC Finance | 700 | |
| 55 | 29-Aug-04 | TBD | PBMS | Time Warner | Reception/Jazz | RNC Finance | TBD | |
| 56 | 29-Aug-04 | TBD | PBMS | 21 Club | Wine Cellar | Roy B. Fund/Rely on Your Beliefs Fund | TBD | |
| 57 | 29-Aug-04 | TBD | PBMS | TBD | Dinner | Roy B. Fund/Rely on Your Beliefs Fund | 22 | |
| 58 | 29-Aug-04 | TBD | PBMS | Rainbow Room | Brunch | Senator Don Nickles | 300 | |
| 59 | 29-Aug-04 | TBD | PBMS | NYSE | TBD | Texas Republican Party | TBD | |
| 60 | 29-Aug-04 | 1700-2000 | PBMS | Central Park Boathouse | TBD | Van Scoyoc & Associates | AL | |
| 61 | 29-Aug-04 | 1700-2200 | PBMS | Lighthouse | Reception | Verizon | 500 | |
| 62 | 29-Aug-04 | TBD | PBMS | Tavern on the Green | Brunch | Virgin Islands Republican Party | 500 | |
| 63 | 29-Aug-04 | TBD | PBMS | Lighthouse | TBD | Verizon | TBD | Possible event hosted by Altria |
| 64 | 29-Aug-04 | 1130-1400 | PBMS | Lighthouse | Brunch | Wisconsin Republican Party | WI | 200 |

56 Events For -8/29/04

| | | | | | | | | | |
|----------------------------|-----------|-----------|------|-----------------------------------|-----------------------|---|-----|-------|---|
| RNC EVENTS AUGUST 30, 2004 | | | | | | | | | |
| 65 | 30-Aug-04 | 1700- | PBMS | NY Yacht Club | Pre-Session Reception | Americans for Tax Reform | TBD | | Sen. Santorum wishes to have on boat |
| 66 | 30-Aug-04 | TBD | PBMS | Boat | Reception | America's Foundation PAC | 80 | | |
| 67 | 30-Aug-04 | TBD | PBMS | Central Park Zoo | Pre-Session Reception | AT&T | TBD | | |
| 68 | 30-Aug-04 | TBD | PBMS | Sky Lounge, New Yorker Hotel | TBD | AT&T | TBD | | |
| 69 | 30-Aug-04 | 1600-1900 | PBMS | Tavern on the Green | Reception | California Republican Party | CA | 1,200 | |
| 70 | 30-Aug-04 | 2200-0100 | PBMS | Tavern on the Green | Reception | California Republican Party | CA | 1,200 | |
| 71 | 30-Aug-04 | 1200-1800 | PBMS | Gold & White Room/The Plaza Hotel | Luncheon | Capitol Health Group | TBD | | Joint w/Verizon in honor of Sen. Grassley |
| 72 | 30-Aug-04 | TBD | PBMS | Maison Restaurant | Breakfast | Connecticut Republican Party | TBD | | |
| 73 | 30-Aug-04 | TBD | PBMS | Manhattan Ctr. | Luncheon | Connecticut Republican Party | TBD | | |
| 74 | 30-Aug-04 | 2200- | PBMS | Tavern on the Green | Dinner | Connecticut Republican Party | 100 | | Hosted by Behr |
| 75 | 30-Aug-04 | TBD | PBMS | NY Yacht Club | TBD | Disillated Spirits Council of The United States | TBD | | |
| 76 | 30-Aug-04 | TBD | PBMS | Hammerstein Ballroom | TBD | General Motors | TBD | | |
| 77 | 30-Aug-04 | TBD | PBMS | TBD | Breakfast | Georgia Republican Party | GA | TBD | |
| 78 | 30-Aug-04 | TBD | PBMS | Tiffany's | Breakfast | Governor George Pataki | NY | TBD | w/ Mrs. Pataki |
| 79 | 30-Aug-04 | TBD | PBMS | Yankee Stadium | Yankee Game | Gov. Robert Ehrlich | MD | TBD | Hosted by Comcast |
| 80 | 30-Aug-04 | TBD | PBMS | Yacht in North Cove | TBD | Indiana Republican Party | TBD | | |
| 81 | 30-Aug-04 | 1300-1700 | PBMS | Plaza Hotel | Tea Party | Iowa Republican Party | TBD | | |
| 82 | 30-Aug-04 | All Day | PBMS | 21 Club/Rermington Room | TBD | Lew Eisenberg | 20 | | |
| 83 | 30-Aug-04 | TBD | PBMS | Intrepid | Pre-Session | Massachusetts Republican Party | TBD | | |
| 84 | 30-Aug-04 | TBD | PBMS | Intrepid | Concert/Reception | Mayor Rudy Giuliani | TBD | 6,000 | |
| 85 | 30-Aug-04 | 1700-1900 | PBMS | Madame Tussaud's Wax Museum | Reception | Missouri Republican Party | TBD | | |

(Tentative)

| | | | | | | | | |
|-----|-----------|-----------|------|------------------------|----------------|--|-----|---------------------------------|
| 642 | 29-Aug-04 | TBD | PBMS | TBD | Brunch | Oklahoma Republican Party | TBD | w/ Senator Nickles |
| 643 | 29-Aug-04 | TBD | PBMS | Pratt House | Reception | Oregon Republican Party | 300 | "Oregon Meets NY" party |
| 644 | 29-Aug-04 | TBD | PBMS | NYSE | Reception | Rep. Tom Delay | TBD | Honor Texas Delegation |
| 645 | 29-Aug-04 | TBD | PBMM | Tavern on the Green | Dinner | Republican Finance Committee | 100 | |
| 646 | 29-Aug-04 | TBD | PBBS | Keyspan Park | Concert | Republican Mainstreet Partnership | TBD | |
| 647 | 29-Aug-04 | 1400-1700 | PBMS | Sky Club | TBD | Republican Mainstreet Partnership | TBD | |
| 648 | 29-Aug-04 | TBD | PBBS | Keyspan Park | Concert | RGA | TBD | |
| 649 | 29-Aug-04 | TBD | PBMS | 21 Club | Dinner | RNC Finance | 100 | |
| 650 | 29-Aug-04 | TBD | PBMS | Blue Fin | Dinner | RNC Finance | 100 | |
| 651 | 29-Aug-04 | TBD | PBMS | Le Cirque | Dinner | RNC Finance | 100 | |
| 652 | 29-Aug-04 | TBD | PBMS | Noche | Dinner | RNC Finance | 100 | |
| 653 | 29-Aug-04 | TBD | PBMS | River Café | Dinner | RNC Finance | 100 | |
| 654 | 29-Aug-04 | TBD | PBMM | Tavern on the Green | Dinner | RNC Finance | 100 | |
| 655 | 29-Aug-04 | TBD | PBMM | Time Warner | Reception/Jazz | RNC Finance | 700 | |
| 656 | 29-Aug-04 | TBD | PBMS | 21 Club | Wine Cellar | Roy B. Fund/Relly on Your Beliefs Fund | TBD | |
| 657 | 29-Aug-04 | TBD | PBMS | TBD | Dinner | Roy B. Fund/Relly on Your Beliefs Fund | 22 | |
| 658 | 29-Aug-04 | TBD | PBMS | Rainbow Room | Dinner | Senator Don Nickles | 300 | |
| 659 | 29-Aug-04 | 1700-2000 | PBMS | NYSE | Brunch | Texas Republican Party | TBD | |
| 660 | 29-Aug-04 | TBD | PBMM | Central Park Boathouse | TBD | Van Scoyoc & Associates | AL | |
| 661 | 29-Aug-04 | 1700-2200 | PBMS | Lighthouse | Reception | Verizon | 500 | |
| 662 | 29-Aug-04 | TBD | PBMS | Tavern on the Green | Brunch | Verizon | 500 | |
| 663 | 29-Aug-04 | TBD | PBMS | TBD | TBD | Virgin Islands Republican Party | TBD | Possible event hosted by Altria |
| 664 | 29-Aug-04 | 1130-1400 | PBMS | Lighthouse | Brunch | Wisconsin Republican Party | WI | 200 |

56 Events For -8/29/04

| | | | | | | | | |
|-----|-----------|-----------|------|-----------------------------------|-----------------------|--|-------|---|
| 665 | 30-Aug-04 | 1700- | PBMS | NY Yacht Club | Pre-Session Reception | Americans for Tax Reform | TBD | |
| 666 | 30-Aug-04 | TBD | PBMS | Boat | Reception | Americans Foundation PAC | 80 | Sen. Santorum wishes to have on boat |
| 667 | 30-Aug-04 | TBD | PBMM | Central Park Zoo | Pre-Session Reception | AT&T | TBD | |
| 668 | 30-Aug-04 | TBD | PBMS | Sky Lounge, New Yorker Hotel | TBD | AT&T | TBD | |
| 669 | 30-Aug-04 | 1600-1900 | PBMM | Tavern on the Green | Reception | California Republican Party | CA | 1,200 |
| 670 | 30-Aug-04 | 2200-0100 | PBMM | Tavern on the Green | Reception | California Republican Party | CA | 1,200 |
| 671 | 30-Aug-04 | 1200-1800 | PBMS | Gold & White Room/The Plaza Hotel | Luncheon | Capitol Health Group | TBD | Joint w/Verizon in honor of Sen. Grassley |
| 672 | 30-Aug-04 | TBD | PBMS | Maison Restaurant | Breakfast | Connecticut Republican Party | TBD | |
| 673 | 30-Aug-04 | TBD | PBMS | Manhattan Ctr. | Luncheon | Connecticut Republican Party | TBD | |
| 674 | 30-Aug-04 | 2200- | PBMS | Tavern on the Green | Dinner | Connecticut Republican Party | TBD | |
| 675 | 30-Aug-04 | TBD | PBMS | NY Yacht Club | TBD | Connecticut Republican Party | 100 | Hosted by Behr |
| 676 | 30-Aug-04 | TBD | PBMS | Hammerstein Ballroom | TBD | Disillted Spirits Council of The United States | TBD | |
| 677 | 30-Aug-04 | TBD | PBMS | TBD | Breakfast | General Motors | TBD | |
| 678 | 30-Aug-04 | TBD | PBMS | Tiffany's | Breakfast | Georgia Republican Party | GA | TBD |
| 679 | 30-Aug-04 | TBD | PBBX | Yankee Stadium | Breakfast | Governor George Pataki | NY | TBD |
| 680 | 30-Aug-04 | TBD | PBMS | Yacht in North Cove | Yankee Game | Gov. Robert Ehrlich | MD | TBD |
| 681 | 30-Aug-04 | 1300-1700 | PBMS | Plaza Hotel | TBD | Indiana Republican Party | TBD | |
| 682 | 30-Aug-04 | All Day | PBMS | 21 Club/Remington Room | Tea Party | Iowa Republican Party | TBD | |
| 683 | 30-Aug-04 | TBD | PBMS | Intrepid | TBD | Iowa Republican Party | TBD | |
| 684 | 30-Aug-04 | TBD | PBMS | Intrepid | Pre-Session | Low Eisenberg | 20 | |
| 685 | 30-Aug-04 | 1700-1900 | PBMS | Madame Tussaud's Wax Museum | Concert/Reception | Massachusetts Republican Party | TBD | |
| 686 | 30-Aug-04 | 1700-1900 | PBMS | Madame Tussaud's Wax Museum | Reception | Mayor Rudy Giuliani | 6,000 | |
| 687 | 30-Aug-04 | 1700-1900 | PBMS | Madame Tussaud's Wax Museum | Reception | Missouri Republican Party | TBD | |

2004-2005 Events (Tentative)

| Event # | Date | Time | Location | Activity | Organization | Notes | Quantity |
|---------|-----------|-----------|----------|------------------------|---|-----------------------------------|----------|
| 106 | 30-Aug-04 | TBD | PBMS | Board Meeting | National Federation of Republican Women | | 200 |
| 107 | 30-Aug-04 | TBD | PBMS | Pre-Session Reception | New Jersey Republican Party | | TBD |
| 108 | 30-Aug-04 | TBD | PBMS | TBD | Newsweek | | TBD |
| 109 | 30-Aug-04 | TBD | PBMS | TBD | NRCC | | TBD |
| 110 | 30-Aug-04 | TBD | PBMS | Luncheon | NRSC | | TBD |
| 111 | 30-Aug-04 | TBD | PBMS | Luncheon | NRSC | | TBD |
| 112 | 30-Aug-04 | TBD | PBMS | Breakfast | Ohio Republican Party | | TBD |
| 113 | 30-Aug-04 | 1600-1800 | PBMS | TBD | Ohio Republican Party | | TBD |
| 114 | 30-Aug-04 | TBD | PBMS | Pre-Session Reception | Primedia | Would like a tour | 100 |
| 115 | 30-Aug-04 | TBD | PBMS | TBD | Quinn Gillespie | | TBD |
| 116 | 30-Aug-04 | TBD | PBMS | Breakfast | Rep. Dennis Hastert | | IL TBD |
| 117 | 30-Aug-04 | TBD | PBMS | Golf Tournament | Rep. Dennis Hastert | | IL TBD |
| 118 | 30-Aug-04 | TBD | PBMS | Reception | Rep. Jeb Hensarling | | 500 |
| 119 | 30-Aug-04 | 1900-2300 | PBMS | Cocktail Reception | Rep. Jerry Lewis | | CA 300 |
| 120 | 30-Aug-04 | TBD | NC | Golf Tournament | Rep. Tom Delay | | TX TBD |
| 121 | 30-Aug-04 | TBD | TBD | Luncheon | Republican Jewish Coalition | Possibly in a hotel function room | 250 |
| 122 | 30-Aug-04 | TBD | TBD | Evening Gala | Republican Jewish Coalition | | 1,000 |
| 123 | 30-Aug-04 | TBD | PBMS | Luncheon | Republican Unity Coalition | | TBD |
| 124 | 30-Aug-04 | TBD | PBMS | Pre-Session Reception | RGAs | The Big Tent Event | 500 |
| 125 | 30-Aug-04 | TBD | PBMS | Cocktail Reception | Rhode Island Republican Party | | TBD |
| 126 | 30-Aug-04 | TBD | PBMS | Luncheon | RNC Finance | | 150 |
| 127 | 30-Aug-04 | TBD | PBMS | Luncheon | RNC Finance | | 150 |
| 128 | 30-Aug-04 | TBD | PBMS | Reception | RNC Finance | | 250 |
| 129 | 30-Aug-04 | TBD | PBMS | Breakfast | Roy B. Fund/Rely on Your Beliefs Fund | | 300 |
| 130 | 30-Aug-04 | TBD | PBMS | Post-Session Dinner | Roy B. Fund/Rely on Your Beliefs Fund | | 20 |
| 131 | 30-Aug-04 | TBD | PBMS | Luncheon | Senator Don Nickles | OK | 50 |
| 132 | 30-Aug-04 | TBD | TBD | Reception | Senator Don Nickles | OK | 300 |
| 133 | 30-Aug-04 | TBD | TBD | Breakfast | Sen. Lindsey Graham | SC | TBD |
| 134 | 30-Aug-04 | TBD | PBMS | Luncheon | Sonnenstirn Nathan & Rosenthal | | 75 |
| 135 | 30-Aug-04 | TBD | PBMS | Breakfast | South Carolina Republican Party | | TBD |
| 136 | 30-Aug-04 | TBD | TBD | Reception | Tennessee Republican Party | | TBD |
| 137 | 30-Aug-04 | TBD | TBD | Breakfast | Tennessee Republican Party | | TBD |
| 138 | 30-Aug-04 | TBD | PBMS | Breakfast | UBS | | TBD |
| 139 | 30-Aug-04 | TBD | PBMS | Evening Reception | Union Pacific Railroad | | TBD |
| 140 | 30-Aug-04 | 1100-1400 | PBMS | Press Event | Union Pacific Railroad | | TBD |
| 141 | 30-Aug-04 | TBD | PBMS | Reception | Velocity Communications LLP | TX | 500 |
| 142 | 30-Aug-04 | TBD | PBMS | Luncheon | Verizon | | TBD |
| 143 | 30-Aug-04 | TBD | PBMS | Evening Event | Warrior Foundation | | TBD |
| 144 | 30-Aug-04 | TBD | PBMS | Dinner | Washington Republican Party | | TBD |
| 145 | 30-Aug-04 | TBD | TBD | Breakfast | Wyoming Republican Party | | TBD |
| 146 | 30-Aug-04 | TBD | TBD | Dinner | Wyoming Republican Party | | TBD |
| 147 | 30-Aug-04 | TBD | TBD | 62 Events For 08/30/04 | | | |
| 148 | 31-Aug-04 | TBD | PBMS | Post-Session Reception | American Gas Association | joint w/FGA | 750 |
| 149 | 31-Aug-04 | 1800-200 | PBMS | Reception | American Chemistry Council | | TBD |
| 150 | 31-Aug-04 | TBD | PBMS | Luncheon | American Israeli PAC | | TBD |

(Tentative)

| | | | | | | | | |
|-----|-----------|-----------|------|-----|----------------------------|--|-----------|--|
| 130 | 31-Aug-04 | TBD | TBD | TBD | Pre-Session Reception | America's Majority Trust | TBD | TBD |
| 131 | 31-Aug-04 | TBD | TBD | TBD | Reception | Arab American Institute | 1,000 | |
| 132 | 31-Aug-04 | TBD | PBMS | TBD | Wine Cellar | Berman Enterprises | TBD | |
| 133 | 31-Aug-04 | TBD | PBMS | TBD | Post-Session Reception | California Republican Party | TBD | |
| 134 | 31-Aug-04 | TBD | PBMS | TBD | Luncheon | CNBC | TBD | |
| 135 | 31-Aug-04 | 1700-1900 | PBMS | TBD | TBD | Comcast Corporation | 50 | Penn. Con. Del. |
| 136 | 31-Aug-04 | TBD | PBMS | TBD | Breakfast | Connecticut Republican Party | TBD | w/ Tour of Ellis Island & Liberty Island |
| 137 | 31-Aug-04 | TBD | PBMS | TBD | Dinner | Connecticut Republican Party | TBD | Clam Bake |
| 138 | 31-Aug-04 | 1730-2030 | PBMS | TBD | Reception | Conservative Coalition Group | TBD | |
| 139 | 31-Aug-04 | All Day | PBMS | TBD | TBD | Distilled Spirits Council of The United States | TBD | |
| 140 | 31-Aug-04 | TBD | PBMS | TBD | TBD | Fannie Mae | TBD | |
| 141 | 31-Aug-04 | TBD | PBMS | TBD | Pre-Session Reception | Fertilizer Institute | 200 | For Sen. Cochran |
| 142 | 31-Aug-04 | TBD | PBMS | TBD | Breakfast | Financial Services Roundtable | TBD | |
| 143 | 31-Aug-04 | TBD | PBMS | TBD | Evening Event | Financial Services Roundtable | TBD | |
| 144 | 31-Aug-04 | 1400-2000 | TBD | TBD | Possible Reception | Ford Motor Company | 1,500 | Including NASCAR drivers & cars |
| 145 | 31-Aug-04 | 2200- | TBD | TBD | Reception | Global Health Council | 150 | |
| 146 | 31-Aug-04 | TBD | PBMS | TBD | TBD | Hispanic Alliance for Progress Institute | 200 | |
| 147 | 31-Aug-04 | TBD | PBMS | TBD | TBD | Indiana Republican Party | TBD | |
| 148 | 31-Aug-04 | TBD | PBMS | TBD | Post-Session Reception | Indiana Republican Party | TBD | |
| 149 | 31-Aug-04 | 0800-1000 | PBMS | TBD | Breakfast | Iowa Republican Party | TBD | |
| 150 | 31-Aug-04 | 1900-2300 | PBMS | TBD | Reception | Irish American Republican Party | 500-1,000 | near Irish Hunger Memorial |
| 151 | 31-Aug-04 | TBD | PBMS | TBD | Luncheon | Karen Frist | TBD | Honoring Karen Frist |
| 152 | 31-Aug-04 | TBD | PBMS | TBD | Luncheon | Kentucky Republican Party | 200 | |
| 153 | 31-Aug-04 | All Day | PBMS | TBD | TBD | Lew Eisenberg | 20 | |
| 154 | 31-Aug-04 | TBD | PBMS | TBD | Reception | Michigan Republican Party | 300 | |
| 155 | 31-Aug-04 | 1530-1730 | PBMS | TBD | Ladies afternoon Tea party | National Federation of Republican Women | TBD | |
| 156 | 31-Aug-04 | TBD | PBMS | TBD | Reception | National Federation of Republican Women | TBD | |
| 157 | 31-Aug-04 | TBD | PBMS | TBD | Luncheon | National Finance Committee | TBD | |
| 158 | 31-Aug-04 | TBD | PBMS | TBD | Breakfast | New Jersey Republican Party | 200 | |
| 159 | 31-Aug-04 | TBD | PBMS | TBD | Reception | New York Republican Party | 500 | |
| 160 | 31-Aug-04 | TBD | PBMS | TBD | TBD | NRCC | TBD | |
| 161 | 31-Aug-04 | TBD | PBMS | TBD | Dinner | NY Rep State Committee | 600 | |
| 162 | 31-Aug-04 | TBD | TBD | TBD | Breakfast | Ohio Republican Party | TBD | |
| 163 | 31-Aug-04 | 1600-1800 | PBMS | TBD | Post-Session Reception | Ohio Republican Party | TBD | |
| 164 | 31-Aug-04 | TBD | PBMS | TBD | TBD | Pepsi | TBD | |
| 165 | 31-Aug-04 | 1730-2030 | PBMS | TBD | Reception | Political Capital LLC | TBD | |
| 166 | 31-Aug-04 | 1000-1330 | PBMS | TBD | Luncheon & Tour | Rep. Dennis J. Hastert | IL | |
| 167 | 31-Aug-04 | TBD | PBMS | TBD | TBD | Rep. Robert Ney | OH | |
| 168 | 31-Aug-04 | TBD | PBMS | TBD | Reception | Rep. Tom Delay | TX | Lynd Skynard & Blues Traveler |
| 169 | 31-Aug-04 | TBD | PBMS | TBD | Reception | Republican Finance Committee | 1,500 | |
| 170 | 31-Aug-04 | TBD | PBMS | TBD | Luncheon | Republican Jewish Coalition | TBD | |
| 171 | 31-Aug-04 | TBD | TBD | TBD | Evening Event | Republican Jewish Coalition | 1,000 | |
| 172 | 31-Aug-04 | TBD | TBD | TBD | Reception | Republican Pro-Choice Coalition | TBD | Highlight pro-choice elected officials |
| 173 | 31-Aug-04 | TBD | PBMS | TBD | Luncheon | RGA | TBD | |
| 174 | 31-Aug-04 | TBD | PBMS | TBD | Luncheon | RGA | 500 | |
| 175 | 31-Aug-04 | TBD | PBMS | TBD | Pre-Session Reception | RNC Finance | 300 | |

6/24/2004

Confidential - FOUO/LES

000007124

(Tentative)

| | | | | | | |
|-----------|-----------|------|---------------------|----------------------|--------------------------------------|------------|
| 31-Aug-04 | TBD | PBMM | Tavern on The Green | Late-Night Reception | RNC Finance | 1,500 |
| 31-Aug-04 | 0800-1000 | PBMS | The Plaza Hotel | Breakfast | Roy B Fund/Rely on Your Beliefs Fund | MO 300 |
| 31-Aug-04 | TBD | PBMS | ABC Studios | Evening Event | Roy B Fund/Rely on Your Beliefs Fund | MO TBD |
| 31-Aug-04 | 0800-1000 | PBMS | The Plaza Hotel | TBD | Roy B Fund/Rely on Your Beliefs Fund | MO TBD |
| 31-Aug-04 | TBD | PBMM | Mayor's Townhouse | TBD | Senate Host Committee | |
| 31-Aug-04 | TBD | TBD | TBD | Golf Tournament | Sen. Don Nickles | OK TBD |
| 31-Aug-04 | TBD | TBD | Metropolitan Club | Breakfast | Sen. James Inhofe | OK 150 |
| 31-Aug-04 | TBD | PBMS | Cipriani 42 | Evening Event | Sen. John McCain | AZ TBD |
| 31-Aug-04 | TBD | PBMS | TBD | Reception | Sen. Judd Gregg | NH TBD |
| 31-Aug-04 | TBD | PBMS | Broadway Shows | B'way Tks | Sen. Judd Gregg | NH TBD |
| 31-Aug-04 | TBD | TBD | TBD | Breakfast | Tennessee Republican Party | TBD |
| 31-Aug-04 | TBD | TBD | TBD | Luncheon | Tennessee Republican Party | TBD |
| 31-Aug-04 | TBD | PBMM | Tavern on The Green | Reception | West Virginia Republican Party | 150 |
| 31-Aug-04 | 2300-0200 | PBMM | Tavern on The Green | Reception | Wisconsin Republican Party | WI 250 |
| 31-Aug-04 | TBD | PBMS | Grand Havana Room | Luncheon | Wyoming Republican Party | TBD |
| 31-Aug-04 | TBD | TBD | TBD | Post-Session | Gov. Robert Ehrlich | MD 500-600 |
| 31-Aug-04 | TBD | TBD | TBD | Reception | Wyoming Republican Party | TBD |

66 Events For 08/31/04

| | | | | | | |
|------------------------------|-----------|------|--------------------------------|-----------------------|--|-------------------------|
| RNC EVENTS SEPTEMBER 1, 2004 | | | | | | |
| 1-Sep-04 | Afternoon | PBMS | Under Brooklyn Bridge | Picnic | American Gas Association | TBD |
| 1-Sep-04 | TBD | PBMS | New Yorker Hotel/Sky Lounge | TBD | AT&T | TBD |
| 1-Sep-04 | TBD | PBMM | Council of Foreign Relations | Pre-Session Reception | Bermen Enterprises | 200 |
| 1-Sep-04 | TBD | PBMM | Tavern on The Green | Reception | California Republican Party | 1,200 |
| 1-Sep-04 | TBD | PBMS | Maison Restaurant | Breakfast | Connecticut Republican Party | TBD |
| 1-Sep-04 | TBD | PBMS | Madame Tussaud's | Lunch | Connecticut Republican Party | TBD |
| 1-Sep-04 | TBD | PBMS | 21 Club | Dinner | Connecticut Republican Party | TBD |
| 1-Sep-04 | TBD | PBMM | Central Park Boathouse | Pre-Session Event | Edison | TBD |
| 1-Sep-04 | 0830-1100 | PBMS | Marriott Marquis | Breakfast | Fertilizer Institute | 1,000 |
| 1-Sep-04 | 1400-200 | TBD | TBD | Possible Reception | Ford Motor Company | 1,500 |
| 1-Sep-04 | TBD | PBMS | Copacabana | Evening Event | Gov. George Pataki | TBD |
| 1-Sep-04 | 2200- | TBD | TBD | Reception | Global Health Council | 160 |
| 1-Sep-04 | TBD | TBD | Spanish Harlem or Times Square | Street Festival | Hispanic Alliance for Progress Institute | TBD |
| 1-Sep-04 | 1200-1500 | PBMS | Spirit of New York | Luncheon | Illinois Republican Party | 300 |
| 1-Sep-04 | Afternoon | PBMS | Yacht in North Cove | TBD | Indiana Republican Party | TBD |
| 1-Sep-04 | 0800-1000 | PBMS | Sheraton New York | Breakfast | Iowa Republican Party | TBD |
| 1-Sep-04 | TBD | PBMS | Peking & Pier 16 | Reception | Irish American Republican Party | 500-600 |
| 1-Sep-04 | TBD | PBMS | Rockefeller Center | Charity Reception | Karen Frist | TBD |
| 1-Sep-04 | TBD | PBMS | 21 Club | TBD | Lew Eisenberg | 20 |
| 1-Sep-04 | 2200- | TBD | TBD | Possible Reception | Lt. Gov. Steele | MD TBD |
| 1-Sep-04 | 1530-1730 | PBMS | The Plaza | Tea Party | National Federation of Republican Women | TBD |
| 1-Sep-04 | TBD | PBMS | Marriott Marquis | Reception | National Federation of Republican Women | 200 |
| 1-Sep-04 | TBD | PBMS | Tavern on The Green | Pre-Session | New York Republican Party | TBD |
| 1-Sep-04 | TBD | PBMS | Sheraton New York | TBD | NRCC | TBD |
| 1-Sep-04 | TBD | PBMS | Marriott Marquis | Breakfast | Ohio Republican Party | TBD |
| 1-Sep-04 | 2200-0100 | PBMS | Madame Tussaud's | Evening Event | Ohio Republican Party | TBD |
| 1-Sep-04 | TBD | PBMS | Rainbow Room | Reception | Pfizer | 700 |
| 1-Sep-04 | TBD | PBMS | | | | Honoring Mayor Giuliani |

51 Events For 09/01/04
(Tentative)

| | | | | | | |
|----------|-----------|------|----------------------------|-----------------------|--------------------------------------|---------|
| 1-Sep-04 | TBD | PBMS | NY Yacht Club | Luncheon | Prudential | TBD |
| 1-Sep-04 | TBD | PBMS | Hammerstein Ballroom | Concert | Rep. Tom Delay | TBD |
| 1-Sep-04 | TBD | PBMS | Tavern on The Green | Luncheon | Republican Coalition for Life | 500 |
| 1-Sep-04 | TBD | PBMS | TBD | Luncheon | Republican Jewish Coalition | 250 |
| 1-Sep-04 | TBD | PBMS | TBD | Evening Event | Republican Jewish Coalition | 1,000 |
| 1-Sep-04 | TBD | PBMS | TBD | Pre-Session Reception | RGA | TBD |
| 1-Sep-04 | TBD | PBMS | Tao | Pre-Session Reception | Ribbon Society | TBD |
| 1-Sep-04 | TBD | PBMS | Tavern on The Green | Pre-Session Reception | RNC Finance | 300 |
| 1-Sep-04 | TBD | PBMS | 4 Seasons | Pre-Session Reception | RNC Finance | 300 |
| 1-Sep-04 | TBD | PBMS | TBD | Breakfast | Roy B Fund Rely on Your Beliefs Fund | MO 20 |
| 1-Sep-04 | TBD | PBMS | TBD | Dinner | Roy B Fund Rely on Your Beliefs Fund | MO 20 |
| 1-Sep-04 | TBD | PBMS | TBD | Ice Cream Social | Roy B Fund Rely on Your Beliefs Fund | MO 600 |
| 1-Sep-04 | TBD | PBMS | TBD | Cocktail Party | Roy B Fund Rely on Your Beliefs Fund | MO 150 |
| 1-Sep-04 | TBD | PBMS | TBD | Reception | Sen. James Inhofe | OK 250 |
| 1-Sep-04 | 1600-1900 | TBD | TBD | Reception | Sen. Lindsey Graham | SC TBD |
| 1-Sep-04 | TBD | PBMS | Gotham Hall | TBD | Sen. Norm Coleman | MN TBD |
| 1-Sep-04 | TBD | PBMS | TBD | Breakfast | Tennessee Republican Party | TBD |
| 1-Sep-04 | TBD | PBMS | TBD | Reception | Terry Kohler | WI TBD |
| 1-Sep-04 | TBD | PBMS | NY Yacht Club | TBD | Union Pacific Railroad | TBD |
| 1-Sep-04 | All Day | PBMS | Chelsea Pier/ Pier 60 | Reception | Velocity Communications | TX 750 |
| 1-Sep-04 | TBD | PBMS | Lighthouse | Reception | Verizon | TBD |
| 1-Sep-04 | TBD | PBMS | Metropolitan Museum of Art | Evening Event | Western State Republican Party | TBD |
| 1-Sep-04 | 1530-1800 | PBMS | Gotham Hall | Reception | Wish List | 500-800 |
| 1-Sep-04 | TBD | PBMS | Hotel Ballroom | Breakfast | Wish List | 800 |
| 1-Sep-04 | TBD | PBMS | Hotel Ballroom | Reception | Wyoming Republican Party | TBD |
| 1-Sep-04 | TBD | PBMS | Chelsea Pier/ Pier 60 | Luncheon | Rep. Dennis Hastert | 1,200 |
| 1-Sep-04 | 1030-1400 | PBMS | Bryant Park | Luncheon | | |

51 Events For 09/01/04

| | | | | | | |
|------------------------------|-----------|------|-----------------------------|------------------------|---|---------|
| RNC EVENTS SEPTEMBER 2, 2004 | | | | | | |
| 2-Sep-04 | TBD | PBMS | New Yorker Hotel/Sky Lounge | TBD | AT&T | TBD |
| 2-Sep-04 | TBD | PBMS | Metropolitan Museum of Art | Evening Event | California Republican Party | CA TBD |
| 2-Sep-04 | TBD | PBMS | Ellis Island | TBD | Colorado Republican Party | TBD |
| 2-Sep-04 | 1130-1300 | PBMS | Maison Restaurant | Brunch | Connecticut Republican Party | TBD |
| 2-Sep-04 | TBD | PBMS | Museum of Natural History | Dinner | Connecticut Republican Party | TBD |
| 2-Sep-04 | TBD | PBMS | Madame Tussaud's Wax Museum | Evening Event | Governor George Pataki | NY TBD |
| 2-Sep-04 | TBD | PBMS | Embassy Suites | Post-Session Reception | Indiana Republican Party | 200-225 |
| 2-Sep-04 | 0800-1000 | PBMS | Sheraton New York | Breakfast | Iowa Republican Party | TBD |
| 2-Sep-04 | TBD | PBMS | The Peking & Pier 16 | Reception | Irish American Republican Party | 500-600 |
| 2-Sep-04 | 2230-0130 | PBMS | New York Palace | Reception | Minnesota Republican Party | TBD |
| 2-Sep-04 | TBD | PBMS | Marriott Margolis | Luncheon | National Federation of Republican Women | 2,500 |
| 2-Sep-04 | TBD | PBMS | Sheraton New York | TBD | NRCC | TBD |
| 2-Sep-04 | TBD | PBMS | Marriott Margolis | Breakfast | Ohio Republican Party | TBD |
| 2-Sep-04 | 2200-0100 | PBMS | Manhattan Center | Reception | Ohio Republican Party | TBD |
| 2-Sep-04 | 1130-1300 | PBMS | Rockefeller Center | Luncheon | Rep. Dennis Hastert | IL TBD |
| 2-Sep-04 | 1830-2100 | PBMS | Sardi's | Dinner | Rep. Dennis Hastert | IL TBD |
| 2-Sep-04 | 2200-0200 | PBMS | intrepid | Post-Session | Rep. Jerry Lewis | CA TBD |
| 2-Sep-04 | TBD | PBMS | Tavern on The Green | Luncheon | Republican Finance Committee | 100 |
| 2-Sep-04 | TBD | TBD | TBD | Luncheon | Republican Jewish Coalition | 250 |

joint event w/ Union Pacific Railroad

(Tentative)

| | | | | | | | |
|------------------------|-----------|------|------------------------|------------------------|--------------------------------------|----------|--|
| 2-Sep-04 | 1600-1900 | PBMS | Noche | Reception | Republican Jewish Coalition | 700 | |
| 2-Sep-04 | TBD | PBMS | Guastavino's | Pre-Session | RGA | TBD | |
| 2-Sep-04 | TBD | PBMS | 21 Club | Luncheon | RNC Finance | 150 | |
| 2-Sep-04 | TBD | PBMS | Le Cirque | Luncheon | RNC Finance | 150 | |
| 2-Sep-04 | TBD | PBMS | Tavern on The Green | Luncheon | RNC Finance | 150 | |
| 2-Sep-04 | TBD | PBMS | Cipriani 42 | Pre/Post Session event | RNC Finance | 1,500 | |
| 2-Sep-04 | TBD | TBD | TBD | Breakfast | Roy B Fund Rely on Your Beliefs Fund | MO 300 | |
| 2-Sep-04 | 2230- | TBD | TBD | Dinner | Roy B Fund Rely on Your Beliefs Fund | MO 20-30 | |
| 2-Sep-04 | TBD | PBMS | NYSE | Event | Senate Host Committee | TBD | |
| 2-Sep-04 | TBD | TBD | TBD | Breakfast | Sen. James Inhofe | OK 200 | |
| 2-Sep-04 | TBD | TBD | TBD | Breakfast | Tennessee Republican Party | TBD | |
| 2-Sep-04 | TBD | PBMS | Gotham Hall | Breakfast | UBS | TBD | |
| 2-Sep-04 | All Day | PBMS | Chelsea Piers/ Pier 60 | TBD | Union Pacific Railroad | TBD | |
| 2-Sep-04 | TBD | TBD | TBD | Breakfast | Wyoming Republican Party | TBD | |
| 2-Sep-04 | TBD | TBD | TBD | Luncheon | Wyoming Republican Party | TBD | |
| 2-Sep-04 | All Day | TBD | TBD | TBD | Price Waterhouse | TBD | |
| 34 Events For 09/02/04 | | | | | | | |

RNC EVENTS TBD

| | | | | | | | | |
|-----|-----|-----------|------|--------------------------|-------------------------------|---|------------------------------------|-------------------------------|
| 280 | TBD | TBD | PBMS | St. Patrick's Chapel | Mass | Catholic Working Group | TBD | |
| 281 | TBD | TBD | TBD | TBD | TBD | Fabiani & Company | TBD | |
| 282 | TBD | TBD | TBD | Hilton New York | Breakfast | Harris County Republicans | 300 | |
| 283 | TBD | TBD | TBD | Plaza or Waldorf Astoria | Reception | Harris County Republicans | 1,000 | |
| 284 | TBD | TBD | TBD | NYSE | TBD | Illinois Republican Party | TBD | |
| 285 | TBD | TBD | TBD | TBD | TBD | International Program | 225 | |
| 286 | TBD | TBD | TBD | TBD | TBD | National Association of Counties | TBD | |
| 287 | TBD | TBD | TBD | TBD | TBD | National Black Republicans Leadership Council | TBD | |
| 288 | TBD | TBD | TBD | TBD | TBD | Pennsylvania Republican Party | TBD | |
| 289 | TBD | TBD | TBD | TBD | TBD | Rep. David Dreier | CA TBD | |
| 290 | TBD | TBD | TBD | TBD | TBD | Rep. George Radanovich | CA TBD | |
| 291 | TBD | TBD | TBD | Reception | Rep. Jim DeMint | SC 75 | Chairman of House Budget Committee | |
| 292 | TBD | TBD | TBD | TBD | TBD | Rep. Jim Nussle | IA TBD | |
| 293 | TBD | TBD | TBD | TBD | TBD | Rep. Marsha Blackburn | TN TBD | |
| 294 | TBD | TBD | TBD | TBD | TBD | Rep. Phil English | PA TBD | |
| 295 | TBD | TBD | TBD | TBD | TBD | Rep. Rodney Frelinghuysen | NJ TBD | Looking for venue open 24 hrs |
| 296 | TBD | TBD | TBD | TBD | TBD | Rep. Roger Wicker | MS 50 | |
| 297 | TBD | TBD | TBD | TBD | TBD | Rep. Steve Buyer | IN TBD | Honor Texas Delegation |
| 298 | TBD | TBD | TBD | TBD | TBD | Republican Issues Campaign | TBD | |
| 299 | TBD | TBD | TBD | Fashion Show | Rhode Island Republican Party | TBD | | |
| 300 | TBD | TBD | TBD | TBD | TBD | Sen. Ben Campbell | CO TBD | |
| 301 | TBD | TBD | TBD | TBD | TBD | Sen. John Cornyn | TX TBD | |
| 302 | TBD | TBD | TBD | Concert | Sen. Lindsey Graham | SC TBD | w/James Brown | |
| 303 | TBD | TBD | TBD | TBD | TBD | South Carolina Republican Party | TBD | w/James Brown |
| 304 | TBD | Afternoon | TBD | TBD | TBD | Sprint | TBD | need small function space |
| 305 | TBD | TBD | TBD | TBD | TBD | Sprint | TBD | need large conference room |
| 306 | TBD | TBD | TBD | TBD | TBD | Junior Statesman Foundation | 200 | |
| 307 | TBD | TBD | TBD | TBD | TBD | Utah Republican Party | TBD | |

APPENDIX E – RNC Broadway Show Schedule

E

000007128

RNC Broadway Show Schedule

| Show | Theater | Theater Capacity | | States | Passes | | | Total |
|------|---|------------------|------------|--------------------|-----------|------------|-------|-------|
| | | Capacity | % Capacity | | Delegates | Alternates | Guest | |
| 1 | Ford Center for the Performing Arts 213 West 42nd Street | 1,813 | 78% | Texas | 138 | 135 | 364 | 637 |
| | | | | Idaho | 32 | 29 | 82 | 143 |
| | | | | Nebraska (T) | 35 | 32 | 90 | 157 |
| | | | | Oklahoma | 41 | 38 | 106 | 185 |
| | | | | Montana | 28 | 25 | 71 | 124 |
| | | | | Kansas | 39 | 36 | 100 | 175 |
| | | | | | | | | 1,421 |
| 2 | Palace Theater 1564 Broadway (47th Street) | 1,784 | 88% | California | 173 | 170 | 457 | 800 |
| | | | | Nevada | 33 | 30 | 84 | 147 |
| | | | | Oregon | 31 | 28 | 79 | 138 |
| | | | | Arizona | 52 | 49 | 135 | 236 |
| | | | | Utah (T) | 36 | 33 | 92 | 161 |
| | | | | Hawaii (T) | 20 | 17 | 50 | 87 |
| | | | | | | | | 1,569 |
| 3 | Lunt-Fontanne Theater 205 West 46th Street | 1,475 | 90% | Virginia | 64 | 61 | 167 | 292 |
| | | | | Alabama | 48 | 45 | 124 | 217 |
| | | | | Dist of Columbia | 19 | 16 | 47 | 82 |
| | | | | Tennessee | 55 | 52 | 143 | 250 |
| | | | | Maryland | 39 | 36 | 100 | 175 |
| | | | | Georgia (T) | 69 | 66 | 180 | 315 |
| | | | | | | | | 1,331 |
| 4 | Broadway Theater 1681 Broadway (53rd Street) | 1,752 | 81% | Massachusetts | 44 | 41 | 114 | 199 |
| | | | | Alaska | 29 | 26 | 74 | 129 |
| | | | | New Hampshire | 32 | 29 | 82 | 143 |
| | | | | Vermont | 18 | 15 | 44 | 77 |
| | | | | Maine | 21 | 18 | 52 | 91 |
| | | | | Delaware (T) | 18 | 15 | 44 | 77 |
| | | | | Connecticut (T) | 30 | 27 | 76 | 133 |
| | | | | Rhode Island (T) | 21 | 18 | 52 | 91 |
| | | | | Guam (T) | 9 | 6 | 20 | 35 |
| | | | | American Samoa | 9 | 6 | 20 | 35 |
| | | | | Virgin Islands (T) | 9 | 6 | 20 | 35 |
| | | | | South Dakota | 27 | 24 | 68 | 119 |
| | | | | North Dakota (T) | 26 | 23 | 66 | 115 |
| | | | | Iowa | 32 | 29 | 82 | 143 |
| | | | | | | | | 1,422 |

6/24/2004

(T)- Transported by bus from hotels in Lower Manhattan

RNC Broadway Show Schedule

| | | | | | | | | | | |
|---|----------------------|---|-------|-----|-----|--|--|--|---|--|
| 5 | Fiddler on the Roof | Minskoff Theater 1515 Broadway (45th Street) | 1,710 | 82% | 307 | Florida Louisiana Mississippi South Carolina North Carolina | 112 45 38 46 67 | 109 42 35 43 64 | 294 116 98 119 175 | 515 203 171 208 306 1,403 |
| 6 | Phantom of the Opera | Majestic Theatre 247 West 44th Street (7th & 8th Ave) | 1,655 | 91% | 151 | Minnesota Wisconsin West Virginia Washington Arkansas Colorado New Mexico Wyoming Kentucky | 41 40 30 41 35 50 24 28 46 | 38 37 27 38 32 47 21 25 43 | 106 103 76 106 90 130 60 71 119 | 185 180 133 185 157 227 105 124 208 1,504 |
| 7 | Wonderful Town | Al Hirschfeld Theatre 302 West 45th Street (8th & 9th Ave) | 1,437 | 84% | 232 | Ohio Missouri Indiana Michigan | 91 57 55 61 | 88 54 52 58 | 239 148 143 159 | 418 259 250 278 1,205 |
| 8 | Lion King | New Amsterdam Theatre 214 West 42nd Street | 1,747 | 85% | 264 | Illinois New York Puerto Rico (T) New Jersey Pennsylvania | 73 102 23 52 75 | 70 99 20 49 72 | 191 268 58 135 196 | 334 469 101 236 343 1,483 |

APPENDIX F – Committees

F

OPERATION OVERLORD II

NYPD COMMITTEES

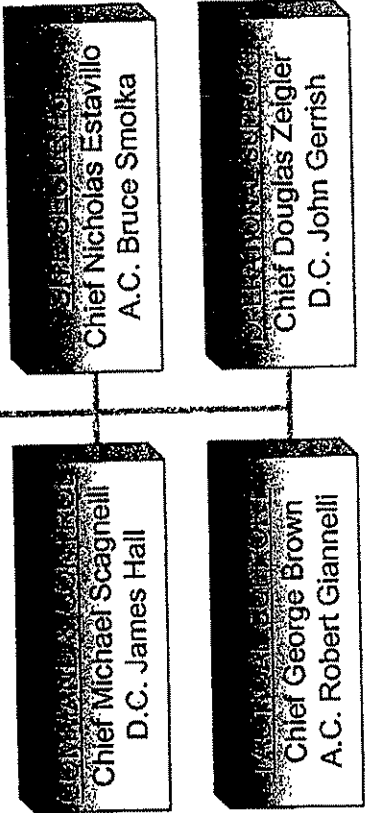
EXECUTIVE COMMITTEE

POLICE COMMISSIONER

RNC COORDINATOR

A.C. John B. McManus

D.I. Matthew V. Pontillo



Effective May 10, 2004

COMMAND & CONTROL COMMITTEE

AND

SUBORDINATE SUB-COMMITTEES

COMMAND & CONTROL

Chief Michael Scagnelli
D.C. James Hall

OPERATIONS
D.C. Henry Wedin

MEDIA

Dep. Com. Paul Browne
Insp. Michael Coan

TRANSPORTATION

A.C. Henry Crohin

Penn Station

D.C. Louis Croce

Bus & Traffic

D.C. Edward Cannon

CITYWIDE SECURITY

A.C. Phil Pulaski

Effective May 10, 2004

SITE SECURITY COMMITTEE AND SUBORDINATE SUB-COMMITTEES

SITE SECURITY

Chief Nicholas Estavillo
A.C. Bruce Smolka

FROZEN AREA

Insp. Kenneth McGrath

DEMO AREA

Insp. Joseph Riley

MOBILE RESPONSE

D.C. Terrence Monahan
Insp. Thomas Graham

HOTELS

D.C. Kevin McBride
Insp. Robert Thurland

OUTER PERIMETER & SAFETY ZONE

D.C. Brian Conroy

QUALITY OF LIFE

D.C. Stephen Paragallo
Insp. Kathy Ryan

VEHICLE CHECKPOINTS

D.I. Michael O'Neil

Effective May 10, 2004

TACTICAL SUPPORT COMMITTEE AND SUBORDINATE SUB-COMMITTEES

TACTICAL SUPPORT

Chief George Brown
A.C. Robert Giannelli

JOINT SPECIAL SERVICES
A.C. Charles Kemmerdener

INTELCOUNTER TERRORISM
A.C. Phil Pulaski
A.C. Michael Tiffany

INVESTIGATIVE RESPONSE
A.C. Robert Giannelli

DIGNITARY PROTECTION
A.C. Michael Tiffany

MSG INTERIOR SECURITY
A.C. Robert Giannelli

Effective May 10, 2004

OPERATIONAL SUPPORT COMMITTEE

&

SUBORDINATE SUB-COMMITTEES

OPERATIONAL SUPPORT

Chief Douglas Zelgler
D.C. John Gerrish

LEGAL

ADC Thomas Doepfner

COMMUNICATIONS

Dep. Comm. James Onalfo
D.C. Thomas Gangone

LOGISTICS

Insp. Santo Scribani

CRITIQUE

D.I. John Donohue

TRAINING

Dep. Comm. James Fyfe
D.C. Diane Pizzuti

FISCAL

Dep. Comm. Edward Allocco

ACCREDITATION

D.I. Lisa Prati

PRISONER PROCESSING

A.C. Patrick Devlin

Effective May 10, 2004

FEDERAL COMMITTEES

NYPD CO-CHAIRS & PRINCIPAL REPRESENTATIVES

| | | |
|---|--|---|
| Executive Steering Committee | | A.C. John B. McManus (co-chair) |
| Airspace Security | | A.C. Charles Kammerdener (co-chair) D.I. Joseph Gallucci |
| Civil Disturbance & Prisoner Processing | | A.C. Bruce Smolka (co-chair) A.C. Patrick Devlin |
| Consequence Management | | A.C. Phil Pulaski (NYPD Lead) D.C. John Gerrish |
| Credentialing | | D.C. John Gerrish (co-chair) D.I. Lisa Prati |
| Critical Systems Protection | | D.C. John Gerrish (co-chair) |
| Crisis Management | | D.C. Harry Wedin (co-chair) |
| Critical Systems Protection | | D.C. John Gerrish Director Donald Burrus |

Effective May 10, 2004

FEDERAL COMMITTEES

NYPD CO-CHAIRS & PRINCIPAL REPRESENTATIVES

| | |
|----------------------------------|---|
| Dignitary & VIP Protection | A.C. Michael Tiffany (co-chair) Insp. Kevin Perham |
| E.O.D. | A.C. Robert Giannelli (co-chair) |
| Fire & Life Safety | A.C. Charles Kammerdener (co-chair) A.C. Phil Pulaski |
| Haz-mat | A.C. Charles Kammerdener (co-chair) A.C. Phil Pulaski |
| Intelligence & Counter Terrorism | A.C. Michael Tiffany (co-chair) A.C. Phil Pulaski A.C. Robert Giannelli |
| Interagency Communication | D.C. John Gerrish (co-chair) Insp. Jay Kopstein |
| Legal | D.C. John Gerrish (co-chair) ADC Thomas Doepfner |

Effective May 10, 2004

FEDERAL COMMITTEES

NYPD CO-CHAIRS & PRINCIPAL REPRESENTATIVES

| | |
|--------------------------|--|
| Public Affairs | D.C. Michael Collins (co-chair) A.C. Bruce Smolka Insp. Michael Coan |
| Tactical | A.C. Charles Kammerdener (co-chair) A.C. Robert Giannelli |
| Training | D.C. John Gerrish (co-chair) Insp. Robert Lucena |
| Transportation & Traffic | D.C. Edward Cannon (co-chair) Capt. Michael Pilecki |
| Venue Security | A.C. Bruce Smolka (co-chair) A.C. Robert Giannelli |

Effective May 10, 2004

APPENDIX G – Equipment Procurement

G

000007140

OPERATION OVERSIGHT AND REGULATORY COMMENTARY
APPROVED EQUIPMENT REQUESTS

SPECIAL OPERATIONS DIVISION

REDACTED
Law Enforcement Privilege

COMMUNICATIONS DIVISION

| ITEM # | ITEM DESCRIPTION | DATE FWD | DCMB ENDORSED | Purchase Req. | Purchase Order | 480 | QUANTITY | UNIT COST | TOTAL COST |
|--------|---------------------------------------|-----------|---------------|---------------|----------------|-----|----------|-----------|-------------|
| 1 | Telephone and fax lines | 2/23/2004 | 2/26/2004 | 5/17/2004 | | N | 50 | \$120.00 | \$6,000.00 |
| 2 | NexTel Cellular Telephones w/ service | 2/23/2004 | 2/26/2004 | 3/11/2004 | | N | 600 | \$90.00 | \$54,000.00 |
| 3 | Fax Machines | 2/23/2004 | 2/26/2004 | 3/13/2004 | | N | 5 | \$600.00 | \$3,000.00 |

REDACTED
Law Enforcement Privilege

6/24/2004

Confidential

REDACTED
Law
Enforcement
Privilege

Equipment Procurement

INTELLIGENCE DIVISION

MSD

| ITEM # | ITEM DESCRIPTION | DATE FWD | DCMB | EXPORSED | PURCHASE | PURCHASE | 460 | QUANTITY | UNIT COST | TOTAL COST |
|--------|---|-----------|-----------|-----------|----------|----------|-----|----------|------------|-------------|
| | | | | | Req. | Order | | | | |
| 1 | Computer Workstations | 2/17/2004 | 2/17/2004 | 2/25/2004 | | | N | 50 | \$1,200.00 | \$60,000.00 |
| 2 | Laptop Computers | 2/17/2004 | 2/17/2004 | 2/25/2004 | | | N | 58 | \$1,125.00 | \$65,250.00 |
| 3 | 802.11 Air Cards | 2/17/2004 | 2/17/2004 | 2/25/2004 | | | N | 25 | \$1,000.00 | \$25,000.00 |
| 4 | CDPD/GDMA access cards | 2/17/2004 | 2/17/2004 | 2/25/2004 | | | N | 25 | \$500.00 | \$12,500.00 |
| 5 | PowerLite projectors | 2/17/2004 | 2/17/2004 | 2/25/2004 | | | N | 5 | \$1,500.00 | \$7,500.00 |
| 6 | Impact Matrix Printer | 2/17/2004 | 2/17/2004 | 2/25/2004 | | | N | 5 | \$2,936.50 | \$14,682.50 |
| 7 | Small laser printers (C-IE) | 2/17/2004 | 2/17/2004 | 2/25/2004 | | | N | 20 | \$1,104.00 | \$22,080.00 |
| 8 | Computer Workstations w/ flat panel monitors (Operations) | 2/25/2004 | 2/25/2004 | 3/9/2004 | | | N | 3 | \$1,500.00 | \$4,500.00 |
| 9 | Laptop Computers (Operations) | 2/25/2004 | 2/25/2004 | 3/9/2004 | | | N | 2 | \$123.48 | \$246.96 |
| 10 | Printer Servers (Operations) | 2/25/2004 | 2/25/2004 | 3/9/2004 | | | N | 2 | \$247.86 | \$495.72 |
| 11 | Sheet feeding flatbed scanners (Operations) | 2/25/2004 | 2/25/2004 | 3/9/2004 | | | N | 2 | \$72.99 | \$145.98 |
| 12 | USB 2.0 Thumb drives (Operations) | 2/25/2004 | 2/25/2004 | 3/9/2004 | | | N | 10 | \$133.00 | \$1,330.00 |
| 13 | Four Port KVM Switches (Operations) | 2/25/2004 | 2/25/2004 | 3/9/2004 | | | N | 3 | \$12.00 | \$36.00 |
| 14 | Surge Protectors (Operations) | 2/25/2004 | 2/25/2004 | 3/9/2004 | | | N | 10 | \$491.14 | \$4,911.40 |
| 15 | 24 Port Managed Switches (Operations) | 2/25/2004 | 2/25/2004 | 4/20/2004 | | 823 | N | 2 | \$4,236.50 | \$8,473.00 |
| 16 | Dell Power Edge 1750 server (CCC) | 2/25/2004 | 2/25/2004 | 4/20/2004 | | 823 | N | 2 | \$2,798.40 | \$5,596.80 |
| 17 | Dell Power Edge 650 server (CCC) | 2/25/2004 | 2/25/2004 | 4/20/2004 | | 823 | N | 2 | \$995.00 | \$1,990.00 |
| 18 | Avocent Switch View IP (CCC) | 2/25/2004 | 2/25/2004 | 3/9/2004 | | | N | 2 | \$5,154.08 | \$10,308.16 |
| 19 | Color Laser Printer (CCC) | 2/25/2004 | 2/25/2004 | 3/9/2004 | | | N | 1 | \$5,154.08 | \$5,154.08 |

Equipment Procurement

| ITEM # | DESCRIPTION | DATE FWD | DCMB ENCORSED | Purchase Req. | Purchase Order | 460 | QUANTITY | UNIT COST | TOTAL COST |
|--------|---|----------|---------------|---------------|----------------|-----|----------|-------------|--------------|
| 20 | Cisco 3745 w/ 2 WIC cards 48 port kenirox server (5 Penn) | 3/6/2004 | 3/10/2004 | 4/2/2004 | 750 | N | 1 | \$18,742.20 | \$18,742.20 |
| 21 | Powersage 4210 Server | 3/6/2004 | 3/10/2004 | 4/20/2004 | 814 | N | 1 | \$3,645.20 | \$3,645.20 |
| 22 | Powersage rack | 3/6/2004 | 3/10/2004 | 4/20/2004 | 814 | N | 1 | \$12,925.50 | \$12,925.50 |
| 23 | T1 connectors (5 Penn) | 3/6/2004 | 3/10/2004 | 5/17/2004 | | N | 2 | \$3,460.00 | \$6,920.00 |
| 24 | Leimark 7530 Laser Network Printer (5 Penn) | 3/6/2004 | 3/10/2004 | 4/2/2004 | 763 | N | 1 | \$1,578.00 | \$1,578.00 |
| 25 | Scanner (5 Penn) | 3/6/2004 | 3/10/2004 | 3/29/2004 | 768 | N | 1 | \$410.12 | \$410.12 |
| 26 | Visra Controller (5 Penn) | 3/6/2004 | 3/10/2004 | 3/29/2004 | 748 | N | 1 | \$4,526.25 | \$4,526.25 |
| 27 | Visra Display Terminals (5 Penn) | 3/6/2004 | 3/10/2004 | 4/2/2004 | 752 | N | 2 | \$747.00 | \$1,494.00 |
| 28 | Telhy Printer (5 Penn) coax interface option | 3/6/2004 | 3/10/2004 | 3/28/2004 | 757 | N | 2 | \$305.94 | \$611.88 |
| 29 | 3512 Modems (5 Penn) | 3/6/2004 | 3/10/2004 | 3/29/2004 | 757 | N | 2 | \$19.00 | \$38.00 |
| 30 | AGB Switch for modem (5 Penn) | 3/6/2004 | 3/10/2004 | 3/29/2004 | 749 | N | 1 | \$1,979.50 | \$1,979.50 |
| 31 | Computer Rack (5 Penn) | 3/6/2004 | 3/10/2004 | 4/2/2004 | | N | 1 | \$15.00 | \$15.00 |
| 32 | Rack installation kit (5 Penn) | 3/6/2004 | 3/10/2004 | 4/1/2004 | 760 | N | 2 | \$200.00 | \$400.00 |
| 33 | Coax Cable - 1,000 feet (5 Penn) | 3/6/2004 | 3/10/2004 | 4/1/2004 | | N | 1 | \$150.00 | \$150.00 |
| 34 | Coax Cable connectors (5 Penn) | 3/6/2004 | 3/10/2004 | 4/1/2004 | | N | 12 | \$1,125.00 | \$13,500.00 |
| 35 | Computer Equipment (for Crime Overenion Section) IBM Pentium 6ghz | 4/1/2004 | 4/1/2004 | 4/1/2004 | | N | 1 | \$1,200.00 | \$1,200.00 |
| 36 | Computer Equipment (for Crime Overenion Section) IBM Pentium 4ghz | 4/1/2004 | 4/1/2004 | 4/1/2004 | | N | 1 | \$100.00 | \$100.00 |
| 37 | 24 Port Patch (5 Penn) | 3/6/2004 | 3/10/2004 | | | N | 1 | | |
| TOTAL: | | | | | | | | | \$314,711.37 |

CRIMINAL JUSTICE BUREAU

| ITEM # | DESCRIPTION | DATE FWD | DCMB ENCORSED | Purchase Req. | Purchase Order | 460 | QUANTITY | UNIT COST | TOTAL COST |
|--------|--|-----------|---------------|---------------|----------------|-----|----------|-----------|--------------|
| 1 | ILS2 Live scan Fingerprinting Machines | 2/17/2004 | 2/23/2004 | 2/23/2004 | | N | 6 | 33,025.00 | \$198,150.00 |
| 2 | Garrett Walk-through metal detectors | 2/24/2004 | 2/26/2004 | 3/1/2004 | | N | 3 | 3,846.50 | \$11,539.50 |
| 3 | Metal Detector Dolly | 2/24/2004 | 2/26/2004 | 3/1/2004 | | N | 3 | 299.95 | \$899.85 |
| 4 | Battery back-up kit | 2/24/2004 | 2/26/2004 | 3/1/2004 | | N | 3 | 139.97 | \$419.91 |
| TOTAL: | | | | | | | | | \$211,009.26 |

Confidential

6/24/2004

COOGB SWAMP

| ITEM # | ITEM DESCRIPTION | DATE FWD | DCMB ENDORSED | Purchase Req. | Purchase Order | 460 | QUANTITY | UNIT COST | TOTAL COST |
|---------------|--|-----------|---------------|---------------|----------------|-----|----------|-------------|--------------------|
| 1 | Miscellaneous lamination and pinning materials | 2/17/2004 | 3/5/2004 | 3/5/2004 | | N | 1 | \$6,310.26 | \$6,310.26 |
| 2 | Miscellaneous scanner materials | 2/24/2004 | 3/26/2004 | | | N | 1 | \$20,799.99 | \$20,799.99 |
| 3 | Projection Screens and Equipment | 2/24/2004 | 3/26/2004 | | | N | 1 | \$1,283.00 | \$1,283.00 |
| TOTAL: | | | | | | | | | \$28,393.25 |

DISORDER CONTROL UNIT

| ITEM # | ITEM DESCRIPTION | DATE FWD | DCMB ENDORSED | Purchase Req. | Purchase Order | 460 | QUANTITY | UNIT COST | TOTAL COST |
|--------|--|-----------|---------------|---------------|----------------|-----|----------|-----------|-------------|
| 1 | Monadnock 1/2" double flex cuffs | 2/26/2004 | 2/26/2004 | 3/6/2004 | | N | 26000 | \$0.95 | \$24,700.00 |
| 2 | Monadnock cutlars | 2/26/2004 | 2/26/2004 | 3/6/2004 | | N | 360 | \$7.70 | \$2,895.00 |
| 3 | Prisoner transport chains (5 double cuffs) | 2/26/2004 | 2/26/2004 | 3/6/2004 | | N | 150 | \$203.09 | \$30,463.50 |
| 4 | Portable toilets (w/ service contract) | 2/26/2004 | 2/26/2004 | | | N | 10 | \$250.00 | \$2,500.00 |
| 5 | Polaroid cameras | 2/26/2004 | 2/26/2004 | | | N | 30 | \$40.00 | \$1,200.00 |
| 6 | Cases of Polaroid film | 2/26/2004 | 2/26/2004 | | | N | 30 | \$500.00 | \$18,000.00 |
| 7 | Vehicle protective mesh kits | 2/26/2004 | 2/26/2004 | 3/6/2004 | | N | 80 | \$300.00 | \$24,000.00 |
| 8 | Barrier mesh | 2/26/2004 | 2/26/2004 | 3/6/2004 | | N | 80 | \$300.00 | \$24,000.00 |
| 9 | Freeze personal /tra extinguishers | 2/26/2004 | 2/26/2004 | 3/6/2004 | | N | 300 | \$17.50 | \$5,250.00 |

REDACTED
Law
Enforcement
Privilege

TRAFFIC CONTROL DIVISION

| ITEM # | ITEM DESCRIPTION | DATE FWD | DCMB ENDORSED | Purchase Req. | Purchase Order | 460 | QUANTITY | UNIT COST | TOTAL COST |
|---------------|--|-----------|---------------|---------------|----------------|-----|----------|-------------|---------------------|
| 1 | Traffic cones | 2/27/2004 | 3/1/2004 | | | N | 4300 | \$8.00 | \$34,400.00 |
| 2 | Variable message signs | 2/27/2004 | 3/1/2004 | 3/16/2004 | | N | 15 | \$18,050.00 | \$270,750.00 |
| 3 | Illuminated traffic wands | 2/27/2004 | 3/1/2004 | 3/16/2004 | | N | 500 | \$10.00 | \$5,000.00 |
| 4 | Yellow tape - "Police Lines - Do Not Cross" | 2/27/2004 | 3/1/2004 | 3/16/2004 | | N | 200 | \$20.00 | \$4,000.00 |
| 5 | Traffic vests - reflective | 2/27/2004 | 3/1/2004 | 3/16/2004 | | N | 200 | \$12.00 | \$2,400.00 |
| 6 | Beak cutters | 2/27/2004 | 3/1/2004 | 3/16/2004 | | N | 10 | \$75.00 | \$750.00 |
| 7 | Lane delineators - portable, impact resistant ("Flapping Ducks") | 2/27/2004 | 3/1/2004 | 3/16/2004 | | N | 200 | \$124.75 | \$24,950.00 |
| 8 | Lane delineators - portable single traffic pole | 2/27/2004 | 3/1/2004 | 3/16/2004 | | N | 3500 | \$18.03 | \$63,105.00 |
| 9 | Portable variable message signs | 3/18/2004 | 3/22/2004 | 4/15/2004 | | N | 3 | \$7,835.00 | \$23,505.00 |
| 10 | Portable variable message signs stand & accessories | 3/18/2004 | 3/22/2004 | 4/15/2004 | | N | 3 | \$495.00 | \$1,485.00 |
| TOTAL: | | | | | | | | | \$430,345.00 |

FLEET SERVICES DIVISION

| ITEM # | ITEM DESCRIPTION | DATE FWD | DCMB ENDORSED | Purchase Req. | Purchase Order | 460 | QUANTITY | UNIT COST | TOTAL COST |
|---------------|---|-----------|---------------|---------------|----------------|-----|----------|--------------|-----------------------|
| 1 | Twelve-passenger van | 3/22/2004 | 3/18/2004 | | | N | 16 | \$23,534.00 | \$376,544.00 |
| 2 | Fuel Truck | 3/17/2004 | 3/15/2004 | | | N | 0 | \$150,000.00 | \$0.00 |
| 3 | Scooters - Aprilia 150cc two-wheel scooters | | | | 1/30/2004 | N | 300 | \$2,799.00 | \$839,700.00 |
| 4 | 20 Golf Carts | 6/1/2004 | 6/7/2004 | | | N | 1 | \$22,000.00 | \$22,000.00 |
| TOTAL: | | | | | | | | | \$1,238,244.00 |

Equipment Procurement

TECHNICAL ASSISTANCE RESPONSE UNIT

| ITEM # | ITEM DESCRIPTION | DCMR ENDOSED DATE | DCMR ENDOSED DATE | PURCHASE REQ. DATE | PURCHASE ORDER | QUANTITY | UNIT COST | TOTAL COST |
|--------|---|-------------------|-------------------|--------------------|----------------|----------|-----------|-------------|
| 1 | Sony Digital Video Camera Model TRV-36 w/ kit | 3/22/2004 | 3/22/2004 | 4/15/2004 | | 40 | \$789.51 | \$31,584.40 |
| 2 | TDK Media 60 min. MiniDV Tapes | 3/22/2004 | 3/22/2004 | 4/15/2004 | | 80 | \$9.51 | \$760.80 |
| 3 | Shipping for MiniDV Tapes | 3/22/2004 | 3/22/2004 | 4/15/2004 | | 1 | \$14.10 | \$14.10 |

REDACTED
Law Enforcement Privilege

COUNTER TERRORISM BUREAU

REDACTED
Law Enforcement Privilege

Confidential

6/24/2004

Page 6

Equipment Procurement

| ITEM # | ITEM DESCRIPTION | DATE FWD | PCMB ENDS | PURCHASE REQ. | PURCHASE ORDER | QUANTITY | UNIT COST | TOTAL COST | |
|--------|--|-----------|-----------|---------------|----------------|----------|-----------|--------------|--------------|
| 40 | Maxell CN T-30 VHS tape (VPU) | 3/18/2004 | 3/22/2004 | 5/13/2004 | | N | 5000 | \$0.62 | \$3,100.00 |
| 41 | Panasonic 4.7 GB DMF-R120U DVD (VPU) | 3/18/2004 | 3/22/2004 | 5/13/2004 | | N | 1000 | \$1.75 | \$1,750.00 |
| 42 | Graphic station for video MAC (VPU) | 3/18/2004 | 3/22/2004 | | | N | 1 | \$5,500.00 | \$5,500.00 |
| 43 | Electronic Equipment | 3/24/2004 | 3/22/2004 | | | N | 1 | \$4,043.39 | \$4,043.39 |
| 44 | HP Design Jet 5500 42" Large Format Production Printer & 3-year warranty | 3/24/2004 | 3/22/2004 | 4/15/2004 | | N | 1 | \$7,622.90 | \$7,622.90 |
| 45 | HP Design Jet 5500 42" Large Format Production Printer & 3-year warranty | 3/24/2004 | 3/22/2004 | 5/6/2004 | | N | 1 | \$2,156.00 | \$2,156.00 |
| 46 | Technonik Phaser 7300N Printer and 3-year warranty | 3/24/2004 | 3/22/2004 | 5/13/2004 | | N | 1 | \$3,919.00 | \$3,919.00 |
| 47 | Erson Perfection 3200 Photo Color Scanner with 1-year warranty | 3/24/2004 | 3/22/2004 | 4/15/2004 | | N | 1 | \$3,854.28 | \$3,854.28 |
| 48 | Supplies for HP Design Jet 5500 Printer | 3/24/2004 | 3/22/2004 | 5/13/2004 | | N | 1 | \$5,850.00 | \$5,850.00 |
| 49 | Seal 44 Laminator with installation & Training | 3/24/2004 | 3/22/2004 | 5/6/2004 | | N | 1 | \$2,550.00 | \$2,550.00 |
| 50 | Supplies for Technonik Phaser 7300N Printer | 3/24/2004 | 3/22/2004 | 5/13/2004 | | N | 1 | \$196.00 | \$196.00 |
| 51 | Additional Supplies | 3/24/2004 | 3/22/2004 | 5/6/2004 | | N | 1 | \$5,000.00 | \$5,000.00 |
| 52 | Sharp VCR d-head (Training Support Section) | 3/24/2004 | 3/22/2004 | 4/27/2004 | | N | 1 | \$66.75 | \$66.75 |
| 53 | JVC DVD/Video Player (Training Support Section) | 3/24/2004 | 3/22/2004 | 4/27/2004 | | N | 1 | \$158.95 | \$158.95 |
| 54 | White 3" Bender (Training Support Section) | 3/24/2004 | 3/22/2004 | 4/27/2004 | | N | 250 | \$4.28 | \$1,072.50 |
| 55 | High Quality Laser Printer (Training Support Section) | 3/24/2004 | 3/22/2004 | 5/3/2004 | | N | 1 | \$290.00 | \$290.00 |
| 56 | Scanner (Training Support Section) | 3/24/2004 | 3/22/2004 | 5/3/2004 | | N | 1 | \$988.00 | \$988.00 |
| 57 | Leontek Opta ERTS Print Cartridges (Training Support Section) | 3/24/2004 | 3/22/2004 | 5/3/2004 | | N | 1 | \$148.00 | \$148.00 |
| 58 | Leontek 253 Cartridges Color/Black & White (Training Support Section) | 3/24/2004 | 3/22/2004 | 5/3/2004 | | N | 40 | \$32.55 | \$1,302.00 |
| 59 | Plastic Channelizers | 3/16/04 | 4/15/2004 | 4/27/2004 | | N | 60 | \$21.22 | \$1,273.20 |
| 60 | Definitor Posts | 3/15/2004 | 4/15/2004 | 4/27/2004 | | N | 1 | \$25.00 | \$25.00 |
| 61 | Straight Arrow Markings | 3/15/2004 | 4/15/2004 | 4/27/2004 | | N | 1 | \$25.22 | \$25.22 |
| 62 | Curved Arrow Markings | 3/15/2004 | 4/15/2004 | 4/27/2004 | | N | 4 | \$34.71 | \$138.84 |
| 63 | Marking Wand | 3/15/2004 | 4/15/2004 | 4/27/2004 | | N | 25 | \$3.16 | \$79.00 |
| 64 | High Visibility Yellow Paint | 3/15/2004 | 4/15/2004 | 4/27/2004 | | N | 25 | \$3.16 | \$79.00 |
| 65 | Paint marking Black slick | 3/15/2004 | 4/15/2004 | 4/27/2004 | | N | 25 | \$3.16 | \$79.00 |
| 66 | Paint marking fluorescent red | 3/15/2004 | 4/15/2004 | 4/27/2004 | | N | 15 | \$12.17 | \$182.55 |
| 67 | Paint caution yellow | 3/15/2004 | 4/15/2004 | 4/27/2004 | | N | 6 | \$16.61 | \$99.66 |
| 68 | Paint Brushes | 3/15/2004 | 4/15/2004 | 4/27/2004 | | N | 2 | \$21.84 | \$43.68 |
| 69 | Highway warning triangles | 3/15/2004 | 4/15/2004 | 4/27/2004 | | N | 2 | \$17.85 | \$35.70 |
| 70 | Rand Cardbit | 3/15/2004 | 4/15/2004 | 4/27/2004 | | N | 1 | \$81.46 | \$81.46 |
| 71 | Label Maker | 4/15/2004 | 4/27/2004 | 5/19/2004 | | N | 1 | \$17.85 | \$17.85 |
| 72 | Orange Traffic Vests | 3/24/2004 | 3/22/2004 | 4/27/2004 | | N | 1 | \$117.960.00 | \$117,960.00 |
| 73 | Sharp Model 19" TV (Training Support Section) | 3/24/2004 | 3/22/2004 | 4/27/2004 | | N | 1 | \$134.75 | \$134.75 |
| 74 | | | | | | | | | |
| TOTAL: | | | | | | | | \$701,050.82 | |

QUARTERMASTER SECTION

| ITEM # | ITEM DESCRIPTION | DATE FWD | PCMB ENDS | PURCHASE REQ. | PURCHASE ORDER | QUANTITY | UNIT COST | TOTAL COST |
|--------|---------------------------------------|-----------|-----------|---------------|----------------|----------|-----------|--------------|
| 1 | Miscellaneous administrative supplies | 3/11/2004 | 3/15/2004 | | | N | 460 | \$136,293.68 |
| TOTAL: | | | | | | | | \$136,293.68 |

Confidential

6/24/2004

CONFIDENTIAL OPERATING EXPENSES

REDACTED
Law Enforcement Privilege

PROPERTY CLERK'S OFFICE

| ITEM # | ITEM DESCRIPTION | DATE FWD | DCMB ENDORSED | Purchase Req. | Purchase Order | 460 | QUANTITY | UNIT COST | TOTAL COST |
|--------|---|----------|---------------|---------------|----------------|-----|----------|------------|-------------|
| 1 | Invoices | 4/5/2004 | 4/19/2004 | 5/17/2004 | | N | 20 | \$79.00 | \$1,580.00 |
| 2 | Packler Boxes | 4/5/2004 | 4/19/2004 | 5/17/2004 | | N | 5 | \$2,560.00 | \$12,750.00 |
| 3 | Plastic Security Envelopes 9x12 | 4/5/2004 | 4/19/2004 | 5/17/2004 | | N | 11,000 | \$0.08 | \$860.00 |
| 4 | Plastic Security Envelopes 18x24 | 4/5/2004 | 4/19/2004 | 5/17/2004 | | N | 9,000 | \$0.14 | \$1,260.00 |
| 5 | Packler Seals | 4/5/2004 | 4/19/2004 | 5/17/2004 | | N | 10,000 | \$0.21 | \$2,100.00 |
| 6 | Lead Seals | 4/5/2004 | 4/19/2004 | 5/17/2004 | | N | 500 | \$0.11 | \$55.00 |
| 7 | Cardboard Insert | 4/5/2004 | 4/19/2004 | 5/17/2004 | | N | 11 | \$18.50 | \$203.50 |
| 8 | Tape | 4/5/2004 | 4/19/2004 | 5/17/2004 | | N | 200 | \$1.93 | \$386.00 |
| 9 | 40' Storage Trailer Pick-up & Drop-Off Fee for 3 trailers | 4/5/2004 | 4/19/2004 | | | N | 3 | \$195.00 | \$585.00 |
| 10 | Monthly Rental for 3 Talkers | 4/5/2004 | 4/19/2004 | | | N | 12 | \$179.85 | \$2,158.20 |
| 11 | Disposal process per ton | 4/5/2004 | 4/19/2004 | | | N | 4 | \$200.00 | \$800.00 |
| | | | | | | | TOTAL: | | \$22,537.70 |

BUILDING MAINTENANCE SECTION

| ITEM # | ITEM DESCRIPTION | DATE FWD | DCMB ENDORSED | Purchase Req. | Purchase Order | 460 | QUANTITY | UNIT COST | TOTAL COST |
|--------|-------------------------|----------|---------------|---------------|----------------|-----|----------|-------------|-------------|
| 1 | Generator | 4/2/2004 | 4/3/2004 | 4/15/2004 | | N | 2 | \$28,521.44 | \$57,042.88 |
| 2 | Materials for Generator | 4/2/2004 | 4/3/2004 | 4/15/2004 | | N | 1 | \$8,845.20 | \$8,845.20 |
| 3 | Generator Supplies | 4/2/2004 | 4/3/2004 | 4/28/2004 | | N | 1 | \$25,236.95 | \$25,236.95 |
| | | | | | | | TOTAL: | | \$91,125.03 |

GRAND TOTAL (APPROVED REQUESTS): \$18,003,133.25

APPENDIX H – Road Surface Preparation and Barrier Placement Timeline

H

2004 Road Surface Preparation & Barrier Placement Timeline

August

| <i>Sun</i> | <i>Mon</i> | <i>Tue</i> | <i>Wed</i> | <i>Thu</i> | <i>Fri</i> | <i>Sat</i> |
|------------|------------|------------|------------|------------|------------|------------|
| 22 | 23 | 24 | 25 | 26 | 27 | 28 |
| 29 | 30 | 31 | 01 | 02 | 03 | 04 |

CTD Personnel
UVSS install
Storage Boxes
Misc. Equipt.
Start: 0600 hrs
End: Completion

RNC Session One From 1000 hrs till 1300 hrs
RNC Session Two From 2030 hrs till 2300 hrs

Install Concrete Pads – Columbus Const.
Start: 2000 hrs ----- Ends: 0600 hrs.

Secure USA
install Barriers & Booths
Start: 0600 hrs
Ends: 1800 hrs

Smith/Midland Jersey Barriers – Fencing
Start: 1900-----End: 0800

Smith/Midland Jersey Barriers – Fencing
Start: 1900-----End: 0800 hrs.

BMS Electricians
Start: 0800 hrs.
Ends: 1800 hrs.

BMS Electricians
Start: 0800 hrs.
End: Completion

September

